

## ARG40497 anti-SMAD5 antibody

Package: 100 µl  
Store at: -20°C

### Summary

Product Description	Rabbit Polyclonal antibody recognizes SMAD5
Tested Reactivity	Hu, Rat
Tested Application	FACS, ICC/IF, IHC-P, WB
Host	Rabbit
Clonality	Polyclonal
Isotype	IgG
Target Name	SMAD5
Species	Human
Immunogen	Synthetic peptide derived from Human SMAD5.
Conjugation	Un-conjugated
Alternate Names	DWFC; Smad5; JV5-1; Mothers against decapentaplegic homolog 5; Mothers against DPP homolog 5; hSmad5; MADH5; SMAD 5; MAD homolog 5; SMAD family member 5

### Application Instructions

Application table	Application	Dilution
	FACS	1:50
	ICC/IF	1:50 - 1:200
	IHC-P	1:50 - 1:200
	WB	1:500 - 1:2000
Application Note	* The dilutions indicate recommended starting dilutions and the optimal dilutions or concentrations should be determined by the scientist.	
Observed Size	~ 52 kDa	

### Properties

Form	Liquid
Purification	Affinity purified.
Buffer	PBS (pH 7.4), 0.02% Sodium azide and 50% Glycerol.
Preservative	0.02% Sodium azide
Stabilizer	50% Glycerol
Storage instruction	For continuous use, store undiluted antibody at 2-8°C for up to a week. For long-term storage, aliquot and store at -20°C. Storage in frost free freezers is not recommended. Avoid repeated freeze/thaw cycles. Suggest spin the vial prior to opening. The antibody solution should be gently mixed before use.

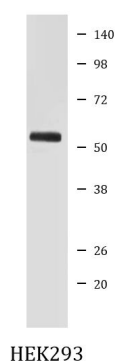
**Note**

For laboratory research only, not for drug, diagnostic or other use.

## Bioinformation

Gene Symbol	SMAD5
Gene Full Name	SMAD family member 5
Background	The protein encoded by this gene is involved in the transforming growth factor beta signaling pathway that results in an inhibition of the proliferation of hematopoietic progenitor cells. The encoded protein is activated by bone morphogenetic proteins type 1 receptor kinase, and may be involved in cancer. Alternative splicing results in multiple transcript variants. [provided by RefSeq, Feb 2014]
Function	Transcriptional modulator activated by BMP (bone morphogenetic proteins) type 1 receptor kinase. SMAD5 is a receptor-regulated SMAD (R-SMAD). [UniProt]
Calculated Mw	52 kDa
PTM	Phosphorylated on serine by BMP (bone morphogenetic proteins) type 1 receptor kinase.  Ubiquitin-mediated proteolysis by SMAD-specific E3 ubiquitin ligase SMURF1. [UniProt]
Cellular Localization	Cytoplasm. Nucleus. Note=Cytoplasmic in the absence of ligand. Migrates to the nucleus when complexed with SMAD4. [UniProt]

## Images



ARG40497 anti-SMAD5 antibody WB image

Western blot: HEK293 cell lysate stained with ARG40497 anti-SMAD5 antibody.