

ARG40510 anti-SLC11A2 / DMT1 antibody

Package: 100 µl
Store at: -20°C

Summary

Product Description	Rabbit Polyclonal antibody recognizes SLC11A2 / DMT1
Tested Reactivity	Hu, Ms, Rat
Tested Application	ICC/IF, WB
Host	Rabbit
Clonality	Polyclonal
Isotype	IgG
Target Name	SLC11A2 / DMT1
Species	Human
Immunogen	KLH-conjugated synthetic peptide corresponding to aa. 262-291 of Human SLC11A2 / DMT1.
Conjugation	Un-conjugated
Alternate Names	NRAMP2; Divalent cation transporter 1; Natural resistance-associated macrophage protein 2; DMT-1; DMT1; Solute carrier family 11 member 2; NRAMP 2; Divalent metal transporter 1; DCT1

Application Instructions

Application table	Application	Dilution
	ICC/IF	1:10 - 1:50
	WB	1:1000
Application Note	* The dilutions indicate recommended starting dilutions and the optimal dilutions or concentrations should be determined by the scientist.	
Positive Control	Rat cerebellum	

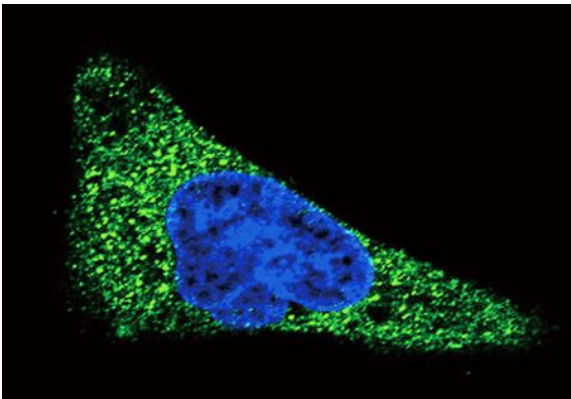
Properties

Form	Liquid
Purification	Purification with Protein A and immunogen peptide.
Buffer	PBS and 0.09% (W/V) Sodium azide.
Preservative	0.09% (W/V) Sodium azide.
Storage instruction	For continuous use, store undiluted antibody at 2-8°C for up to a week. For long-term storage, aliquot and store at -20°C or below. Storage in frost free freezers is not recommended. Avoid repeated freeze/thaw cycles. Suggest spin the vial prior to opening. The antibody solution should be gently mixed before use.
Note	For laboratory research only, not for drug, diagnostic or other use.

Bioinformation

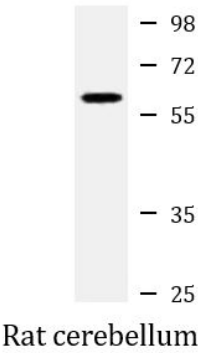
Gene Symbol	SLC11A2
Gene Full Name	solute carrier family 11 (proton-coupled divalent metal ion transporter), member 2
Background	This gene encodes a member of the solute carrier family 11 protein family. The product of this gene transports divalent metals and is involved in iron absorption. Mutations in this gene are associated with hypochromic microcytic anemia with iron overload. A related solute carrier family 11 protein gene is located on chromosome 2. Multiple transcript variants encoding different isoforms have been found for this gene.[provided by RefSeq, Apr 2010]
Function	Important in metal transport, in particular iron. Can also transport manganese, cobalt, cadmium, nickel, vanadium and lead. Involved in apical iron uptake into duodenal enterocytes. Involved in iron transport from acidified endosomes into the cytoplasm of erythroid precursor cells. May play an important role in hepatic iron accumulation and tissue iron distribution. May serve to import iron into the mitochondria. [UniProt]
Calculated Mw	62 kDa
PTM	Ubiquitinated by WWP2. N-glycosylated. [UniProt]
Cellular Localization	Isoform 2: Cell membrane; Multi-pass membrane protein. Early endosome. Endosome membrane; Multi-pass membrane protein. Mitochondrion outer membrane; Multi-pass membrane protein. Cell membrane; Multi-pass membrane protein. Note=Also found in extracellular vesicles different from exosomes. [UniProt]

Images



ARG40510 anti-SLC11A2 / DMT1 antibody ICC/IF image

Immunofluorescence: HepG2 cells stained with ARG40510 anti-SLC11A2 / DMT1 antibody (green). DAPI (blue) for nuclear staining.



ARG40510 anti-SLC11A2 / DMT1 antibody WB image

Western blot: 20 µg of Rat cerebellum lysate stained with ARG40510 anti-SLC11A2 / DMT1 antibody at 1:2000 dilution.