

ARG40511 anti-PPIAL4 antibody

Package: 100 µl
Store at: -20°C

Summary

Product Description	Rabbit Polyclonal antibody recognizes PPIAL4
Tested Reactivity	Hu
Tested Application	WB
Specificity	This antibody reacts to pan-PPIAL4 proteins including PPIAL4A to PPIAL4H.
Host	Rabbit
Clonality	Polyclonal
Isotype	IgG
Target Name	PPIAL4
Species	Human
Immunogen	KLH-conjugated synthetic peptide corresponding to aa. 66-92 of Human PPIAL4.
Conjugation	Un-conjugated
Alternate Names	COAS2; PPIase A-like 4A; COAS-2; Peptidyl-prolyl cis-trans isomerase A-like 4A/B/C; EC 5.2.1.8; PPIAL4B; PPIAL4; Chromosome 1-amplified sequence 2; Cyclophilin homolog overexpressed in liver cancer

Application Instructions

Application table	Application	Dilution
	WB	1:1000
Application Note	* The dilutions indicate recommended starting dilutions and the optimal dilutions or concentrations should be determined by the scientist.	
Positive Control	Human ovary	

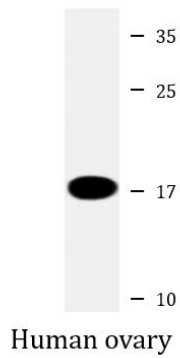
Properties

Form	Liquid
Purification	Purification with Protein A and immunogen peptide.
Buffer	PBS and 0.09% (W/V) Sodium azide.
Preservative	0.09% (W/V) Sodium azide.
Storage instruction	For continuous use, store undiluted antibody at 2-8°C for up to a week. For long-term storage, aliquot and store at -20°C or below. Storage in frost free freezers is not recommended. Avoid repeated freeze/thaw cycles. Suggest spin the vial prior to opening. The antibody solution should be gently mixed before use.
Note	For laboratory research only, not for drug, diagnostic or other use.

Bioinformation

Gene Symbol	PPIAL4A
Gene Full Name	peptidylprolyl isomerase A (cyclophilin A)-like 4A
Function	PPIases accelerate the folding of proteins. It catalyzes the cis-trans isomerization of proline imidic peptide bonds in oligopeptides (By similarity). [UniProt]
Calculated Mw	18 kDa
Cellular Localization	Cytoplasm. [UniProt]

Images



ARG40511 anti-PPIAL4 antibody WB image

Western blot: 20 µg of Human ovary lysate stained with ARG40511 anti-PPIAL4 antibody at 1:2000 dilution.