

ARG40513 anti-OMD antibody

Package: 100 µl
Store at: -20°C

Summary

Product Description	Rabbit Polyclonal antibody recognizes OMD
Tested Reactivity	Hu
Predict Reactivity	Ms
Tested Application	FACS, IHC-P, WB
Host	Rabbit
Clonality	Polyclonal
Isotype	IgG
Target Name	OMD
Species	Human
Immunogen	KLH-conjugated synthetic peptide corresponding to aa. 394-421 of Human OMD.
Conjugation	Un-conjugated
Alternate Names	SLRR2C; Keratan sulfate proteoglycan osteomodulin; Osteoadherin; Osteomodulin; OSAD; KSPG osteomodulin

Application Instructions

Application table	Application	Dilution
	FACS	1:10 - 1:50
	IHC-P	1:50 - 1:100
	WB	1:1000
Application Note	* The dilutions indicate recommended starting dilutions and the optimal dilutions or concentrations should be determined by the scientist.	
Positive Control	HL60	

Properties

Form	Liquid
Purification	This antibody is prepared by Saturated Ammonium Sulfate (SAS) precipitation followed by dialysis against PBS.
Buffer	PBS and 0.09% (W/V) Sodium azide.
Preservative	0.09% (W/V) Sodium azide.
Storage instruction	For continuous use, store undiluted antibody at 2-8°C for up to a week. For long-term storage, aliquot and store at -20°C or below. Storage in frost free freezers is not recommended. Avoid repeated freeze/thaw cycles. Suggest spin the vial prior to opening. The antibody solution should be gently mixed before use.

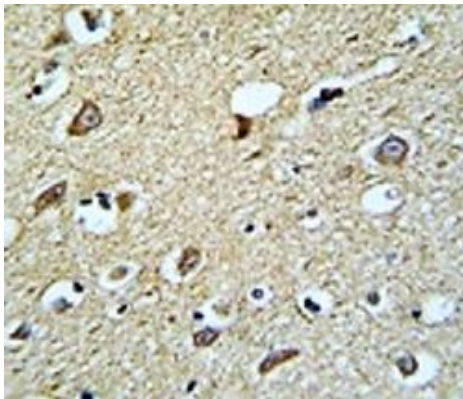
Note

For laboratory research only, not for drug, diagnostic or other use.

Bioinformation

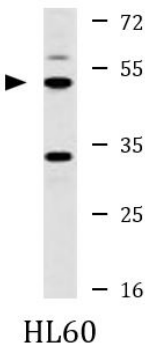
Gene Symbol	OMD
Gene Full Name	osteomodulin
Function	May be implicated in biomineralization processes. Has a function in binding of osteoblasts via the alpha(V)beta(3)-integrin (By similarity). [UniProt]
Calculated Mw	49 kDa
PTM	Binds keratan sulfate chains. [UniProt]
Cellular Localization	Secreted, extracellular space, extracellular matrix. [UniProt]

Images



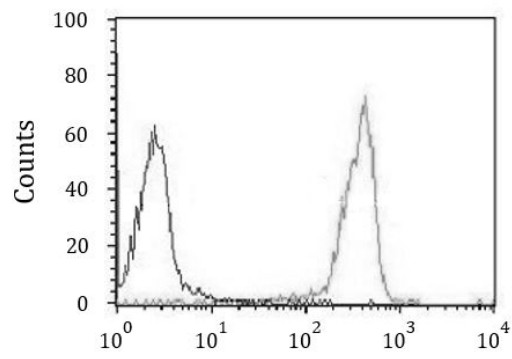
ARG40513 anti-OMD antibody IHC-P image

Immunohistochemistry: Formalin-fixed and paraffin-embedded Human brain tissue stained with ARG40513 anti-OMD antibody.



ARG40513 anti-OMD antibody WB image

Western blot: 35 µg of HL60 cell lysate stained with ARG40513 anti-OMD antibody.



ARG40513 anti-OMD antibody FACS image

Flow Cytometry: HL-60 cells stained with ARG40513 anti-OMD antibody (right histogram) or without primary antibody as control (left histogram), followed by incubation with FITC labelled secondary antibody.