

ARG40524 anti-Neurotensin Receptor 1 antibody

Package: 100 µl
Store at: -20°C

Summary

Product Description	Rabbit Polyclonal antibody recognizes Neurotensin Receptor 1
Tested Reactivity	Hu, Ms
Tested Application	WB
Host	Rabbit
Clonality	Polyclonal
Isotype	IgG
Target Name	Neurotensin Receptor 1
Species	Human
Immunogen	Synthetic peptide of Human Neurotensin Receptor 1.
Conjugation	Un-conjugated
Alternate Names	NTR; NTR1; Neurotensin receptor type 1; NT-R-1; NTRH; High-affinity levocabastine-insensitive neurotensin receptor

Application Instructions

Application table	<table> <tr> <th>Application</th><th>Dilution</th></tr> <tr> <td>WB</td><td>1:500 - 1:2000</td></tr> </table>	Application	Dilution	WB	1:500 - 1:2000
Application	Dilution				
WB	1:500 - 1:2000				
Application Note	* The dilutions indicate recommended starting dilutions and the optimal dilutions or concentrations should be determined by the scientist.				
Positive Control	22Rv1				
Observed Size	65 kDa				

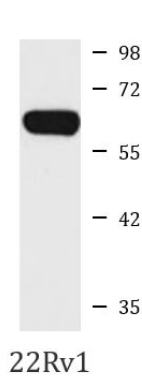
Properties

Form	Liquid
Purification	Affinity purified.
Buffer	PBS (pH 7.3), 0.02% Sodium azide and 50% Glycerol.
Preservative	0.02% Sodium azide
Stabilizer	50% Glycerol
Storage instruction	For continuous use, store undiluted antibody at 2-8°C for up to a week. For long-term storage, aliquot and store at -20°C. Storage in frost free freezers is not recommended. Avoid repeated freeze/thaw cycles. Suggest spin the vial prior to opening. The antibody solution should be gently mixed before use.
Note	For laboratory research only, not for drug, diagnostic or other use.

Bioinformation

Gene Symbol	NTSR1
Gene Full Name	neurotensin receptor 1 (high affinity)
Background	Neurotensin receptor 1 belongs to the large superfamily of G-protein coupled receptors. NTSR1 mediates the multiple functions of neurotensin, such as hypotension, hyperglycemia, hypothermia, antinociception, and regulation of intestinal motility and secretion. [provided by RefSeq, Jul 2008]
Function	G-protein coupled receptor for the tridecapeptide neurotensin (NTS). Signaling is effected via G proteins that activate a phosphatidylinositol-calcium second messenger system. Signaling leads to the activation of downstream MAP kinases and protects cells against apoptosis. [UniProt]
Calculated Mw	46 kDa
PTM	N-glycosylated.
	Palmitoylated; this is required for normal localization at membrane rafts and normal GNA11-mediated activation of down-stream signaling cascades. The palmitoylation level increases in response to neurotensin treatment. [UniProt]
Cellular Localization	Cell membrane; Multi-pass membrane protein. Membrane raft. Note=Palmitoylation is required for localization at CAV1-enriched membrane rafts. [UniProt]

Images



ARG40524 anti-Neurotensin Receptor 1 antibody WB image

Western blot: 25 µg of 22Rv1 cell lysate stained with ARG40524 anti-Neurotensin Receptor 1 antibody at 1:500 dilution.