

ARG40632 anti-Rad51 antibody

Package: 100 µl
Store at: -20°C

Summary

Product Description	Rabbit Polyclonal antibody recognizes Rad51
Tested Reactivity	Hu, Ms, Rat
Tested Application	FACS, ICC/IF, IHC-P, IP, WB
Host	Rabbit
Clonality	Polyclonal
Isotype	IgG
Target Name	Rad51
Species	Human
Immunogen	Synthetic peptide derived from Human Rad51.
Conjugation	Un-conjugated
Alternate Names	DNA repair protein RAD51 homolog 1; HsT16930; FANCR; BRCC5; RECA; HRAD51; hRAD51; HsRAD51; MRMV2; RAD51 homolog A; RAD51A; HsRad51

Application Instructions

Application table	Application	Dilution
	FACS	1:50
	ICC/IF	1:50 - 1:200
	IHC-P	1:50 - 1:200
	IP	1:50
	WB	1:500 - 1:2000
	Application Note	* The dilutions indicate recommended starting dilutions and the optimal dilutions or concentrations should be determined by the scientist.

Properties

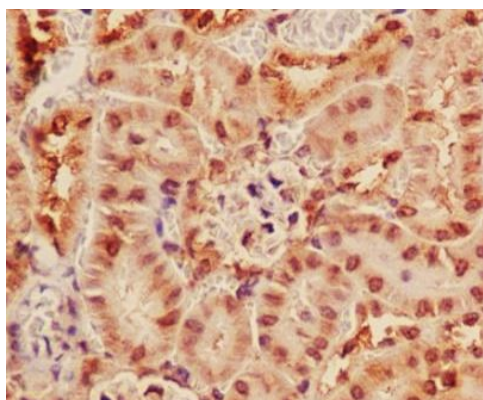
Form	Liquid
Purification	Affinity purified.
Buffer	PBS (pH 7.4), 150 mM NaCl, 0.02% Sodium azide and 50% Glycerol.
Preservative	0.02% Sodium azide
Stabilizer	50% Glycerol
Storage instruction	For continuous use, store undiluted antibody at 2-8°C for up to a week. For long-term storage, aliquot and store at -20°C. Storage in frost free freezers is not recommended. Avoid repeated freeze/thaw cycles. Suggest spin the vial prior to opening. The antibody solution should be gently mixed before use.

Note For laboratory research only, not for drug, diagnostic or other use.

Bioinformation

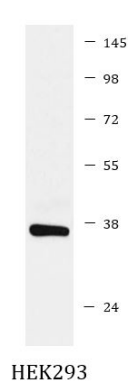
Gene Symbol	RAD51
Gene Full Name	RAD51 recombinase
Background	The protein encoded by this gene is a member of the RAD51 protein family. RAD51 family members are highly similar to bacterial RecA and <i>Saccharomyces cerevisiae</i> Rad51, and are known to be involved in the homologous recombination and repair of DNA. This protein can interact with the ssDNA-binding protein RPA and RAD52, and it is thought to play roles in homologous pairing and strand transfer of DNA. This protein is also found to interact with BRCA1 and BRCA2, which may be important for the cellular response to DNA damage. BRCA2 is shown to regulate both the intracellular localization and DNA-binding ability of this protein. Loss of these controls following BRCA2 inactivation may be a key event leading to genomic instability and tumorigenesis. Multiple transcript variants encoding different isoforms have been found for this gene. [provided by RefSeq, Aug 2009]
Function	Participates in a common DNA damage response pathway associated with the activation of homologous recombination and double-strand break repair. Binds to single and double-stranded DNA and exhibits DNA-dependent ATPase activity. Underwinds duplex DNA and forms helical nucleoprotein filaments. Part of a PALB2-scaffolded HR complex containing BRCA2 and RAD51C and which is thought to play a role in DNA repair by HR. Plays a role in regulating mitochondrial DNA copy number under conditions of oxidative stress in the presence of RAD51C and XRCC3. [UniProt]
Calculated Mw	37 kDa
PTM	Ubiquitinated by the SCF(FBXO18) E3 ubiquitin ligase complex, regulating RAD51 subcellular location and preventing its association with DNA. Phosphorylated. Phosphorylation of Thr-309 by CHEK1 may enhance association with chromatin at sites of DNA damage and promote DNA repair by homologous recombination. Phosphorylation by ABL1 inhibits function. [UniProt]
Cellular Localization	Nucleus. Cytoplasm. Cytoplasm, perinuclear region. Mitochondrion matrix. Cytoplasm, cytoskeleton, microtubule organizing center, centrosome. [UniProt]

Images



ARG40632 anti-Rad51 antibody IHC-P image

Immunohistochemistry: Paraffin-embedded Mouse kidney tissue stained with ARG40632 anti-Rad51 antibody.



ARG40632 anti-Rad51 antibody WB image

Western blot: HEK293 cell lysate stained with ARG40632 anti-Rad51 antibody.