

## ARG40638 anti-MMP9 antibody

Package: 100 µl  
Store at: -20°C

### Summary

Product Description	Rabbit Polyclonal antibody recognizes MMP9
Tested Reactivity	Hu, Rat
Tested Application	FACS, ICC/IF, IHC-P, WB
Host	Rabbit
Clonality	Polyclonal
Isotype	IgG
Target Name	MMP9
Species	Human
Immunogen	Synthetic peptide derived from Human MMP9.
Conjugation	Un-conjugated
Alternate Names	Matrix metalloproteinase-9; 92 kDa gelatinase; MMP-9; Gelatinase B; GELB; CLG4B; MANDP2; EC 3.4.24.35; 92 kDa type IV collagenase

### Application Instructions

Application table	Application	Dilution
	FACS	1:50
	ICC/IF	1:50 - 1:200
	IHC-P	1:50 - 1:200
	WB	1:500 - 1:2000

**Application Note** \* The dilutions indicate recommended starting dilutions and the optimal dilutions or concentrations should be determined by the scientist.

### Properties

Form	Liquid
Purification	Affinity purified.
Buffer	PBS (pH 7.4), 150 mM NaCl, 0.02% Sodium azide and 50% Glycerol.
Preservative	0.02% Sodium azide
Stabilizer	50% Glycerol
Storage instruction	For continuous use, store undiluted antibody at 2-8°C for up to a week. For long-term storage, aliquot and store at -20°C. Storage in frost free freezers is not recommended. Avoid repeated freeze/thaw cycles. Suggest spin the vial prior to opening. The antibody solution should be gently mixed before use.
Note	For laboratory research only, not for drug, diagnostic or other use.

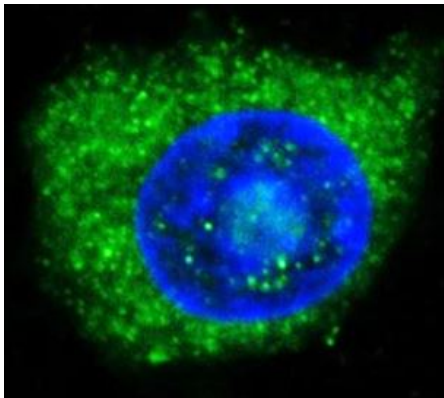
## Bioinformation

---

Gene Symbol	MMP9
Gene Full Name	matrix metalloproteinase 9
Background	Proteins of the matrix metalloproteinase (MMP) family are involved in the breakdown of extracellular matrix in normal physiological processes, such as embryonic development, reproduction, and tissue remodeling, as well as in disease processes, such as arthritis and metastasis. Most MMP's are secreted as inactive proproteins which are activated when cleaved by extracellular proteinases. The enzyme encoded by this gene degrades type IV and V collagens. Studies in rhesus monkeys suggest that the enzyme is involved in IL-8-induced mobilization of hematopoietic progenitor cells from bone marrow, and murine studies suggest a role in tumor-associated tissue remodeling. [provided by RefSeq, Jul 2008]
Function	May play an essential role in local proteolysis of the extracellular matrix and in leukocyte migration. Could play a role in bone osteoclastic resorption. Cleaves KiSS1 at a Gly- -Leu bond. Cleaves type IV and type V collagen into large C-terminal three quarter fragments and shorter N-terminal one quarter fragments. Degrades fibronectin but not laminin or Pz-peptide. [UniProt]
Research Area	Brain Injury IHC Study antibody
Calculated Mw	78 kDa
PTM	Processing of the precursor yields different active forms of 64, 67 and 82 kDa. Sequentially processing by MMP3 yields the 82 kDa matrix metalloproteinase-9.  N- and O-glycosylated. [UniProt]
Cellular Localization	Secreted, extracellular space, extracellular matrix. [UniProt]

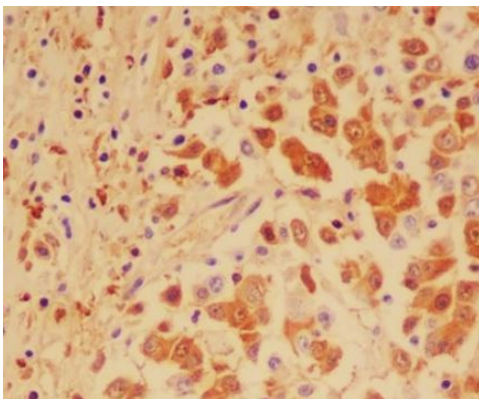
## Images

---



ARG40638 anti-MMP9 antibody ICC/IF image

Immunofluorescence: U87-MG cells stained with ARG40638 anti-MMP9 antibody.



ARG40638 anti-MMP9 antibody IHC-P image

Immunohistochemistry: Paraffin-embedded Human colon cancer tissue stained with ARG40638 anti-MMP9 antibody.

ARG40638 anti-MMP9 antibody WB image

Western blot: Rat kidney lysate stained with ARG40638 anti-MMP9 antibody.

