

ARG40687 anti-IGFBP1 antibody

Package: 50 µg
Store at: -20°C

Summary

Product Description	Rabbit Polyclonal antibody recognizes IGFBP1
Tested Reactivity	Ms, Rat
Tested Application	IHC-P
Host	Rabbit
Clonality	Polyclonal
Isotype	IgG
Target Name	IGFBP1
Species	Mouse
Immunogen	Recombinant protein corresponding to A26-N272 of Mouse IGFBP1.
Conjugation	Un-conjugated
Alternate Names	IBP-1; IBP1; PP12; IGF-BP25; Insulin-like growth factor-binding protein 1; hIGFBP-1; IGFBP-1; Placental protein 12; AFBP; IGF-binding protein 1

Application Instructions

Application table	Application	Dilution
	IHC-P	1:200 - 1:1000
Application Note	IHC-P: Antigen Retrieval: Heat mediation was performed in Citrate buffer (pH 6.0, epitope retrieval solution) for 20 min. * The dilutions indicate recommended starting dilutions and the optimal dilutions or concentrations should be determined by the scientist.	

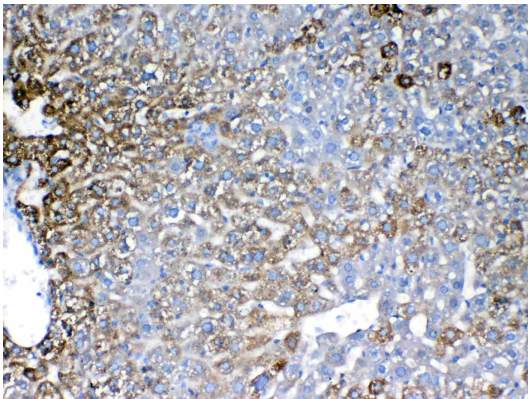
Properties

Form	Liquid
Purification	Affinity purification with immunogen.
Buffer	0.2% Na ₂ HPO ₄ , 0.9% NaCl, 0.05% Sodium azide and 5% BSA.
Preservative	0.05% Sodium azide
Stabilizer	5% BSA
Concentration	0.5 mg/ml
Storage instruction	For continuous use, store undiluted antibody at 2-8°C for up to a week. For long-term storage, aliquot and store at -20°C or below. Storage in frost free freezers is not recommended. Avoid repeated freeze/thaw cycles. Suggest spin the vial prior to opening. The antibody solution should be gently mixed before use.
Note	For laboratory research only, not for drug, diagnostic or other use.

Bioinformation

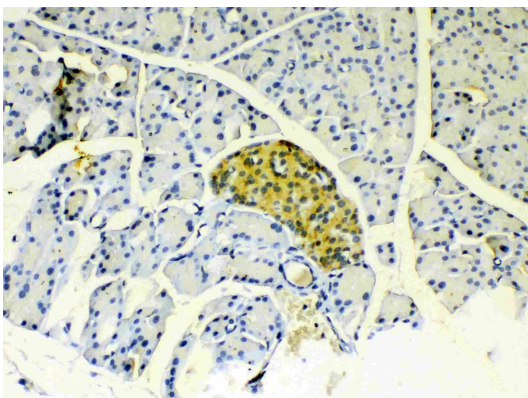
Gene Symbol	IGFBP1
Gene Full Name	insulin-like growth factor binding protein 1
Background	This gene is a member of the insulin-like growth factor binding protein (IGFBP) family and encodes a protein with an IGFBP domain and a thyroglobulin type-I domain. The protein binds both insulin-like growth factors (IGFs) I and II and circulates in the plasma. Binding of this protein prolongs the half-life of the IGFs and alters their interaction with cell surface receptors. [provided by RefSeq, Jul 2008]
Function	IGF-binding proteins prolong the half-life of the IGFs and have been shown to either inhibit or stimulate the growth promoting effects of the IGFs on cell culture. They alter the interaction of IGFs with their cell surface receptors. Promotes cell migration. [UniProt]
Calculated Mw	28 kDa
PTM	Phosphorylated; probably by casein kinase II. Phosphorylation alters the affinity of the protein for IGFs. In amniotic fluid, the unmodified protein is the most abundant form, while mono-, bi-, tri- and tetraphosphorylated forms are present in decreasing amounts. The phosphorylation state may influence the propensity to proteolysis. [UniProt]
Cellular Localization	Secreted. [UniProt]

Images



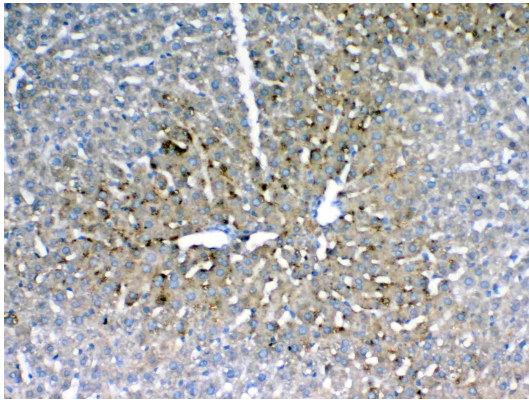
ARG40687 anti-IGFBP1 antibody IHC-P image

Immunohistochemistry: Paraffin-embedded Mouse liver tissue. Antigen Retrieval: Heat mediation was performed in Citrate buffer (pH 6.0, epitope retrieval solution) for 20 min. The tissue section was blocked with 10% goat serum. The tissue section was then stained with ARG40687 anti-IGFBP1 antibody at 1 µg/ml, overnight at 4°C.



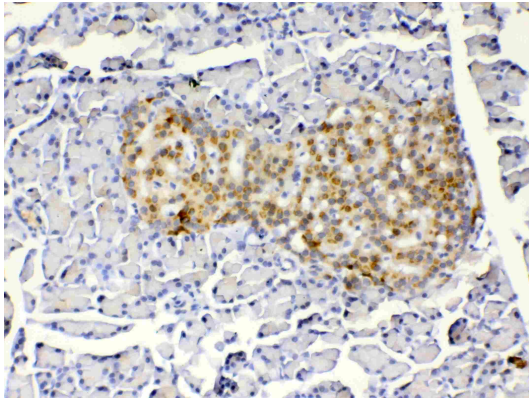
ARG40687 anti-IGFBP1 antibody IHC-P image

Immunohistochemistry: Paraffin-embedded Mouse pancreas tissue. Antigen Retrieval: Heat mediation was performed in Citrate buffer (pH 6.0, epitope retrieval solution) for 20 min. The tissue section was blocked with 10% goat serum. The tissue section was then stained with ARG40687 anti-IGFBP1 antibody at 1 µg/ml, overnight at 4°C.



ARG40687 anti-IGFBP1 antibody IHC-P image

Immunohistochemistry: Paraffin-embedded Rat liver tissue. Antigen Retrieval: Heat mediation was performed in Citrate buffer (pH 6.0, epitope retrieval solution) for 20 min. The tissue section was blocked with 10% goat serum. The tissue section was then stained with ARG40687 anti-IGFBP1 antibody at 1 μ g/ml, overnight at 4°C.



ARG40687 anti-IGFBP1 antibody IHC-P image

Immunohistochemistry: Paraffin-embedded Rat pancreas tissue. Antigen Retrieval: Heat mediation was performed in Citrate buffer (pH 6.0, epitope retrieval solution) for 20 min. The tissue section was blocked with 10% goat serum. The tissue section was then stained with ARG40687 anti-IGFBP1 antibody at 1 μ g/ml, overnight at 4°C.
