

ARG40699 anti-NRF1 antibody

Package: 50 µg
Store at: -20°C

Summary

Product Description	Rabbit Polyclonal antibody recognizes NRF1
Tested Reactivity	Hu, Rat
Predict Reactivity	Hm
Tested Application	ICC/IF, IHC-P
Host	Rabbit
Clonality	Polyclonal
Isotype	IgG
Target Name	NRF1
Species	Human
Immunogen	Synthetic peptide corresponding to aa. 272-288 of Human NRF1. (QHGRELLYAFEDQQTQ)
Conjugation	Un-conjugated
Alternate Names	NRF-1; Nuclear respiratory factor 1; Alpha palindromic-binding protein; ALPHA-PAL; Alpha-pal

Application Instructions

Application table	Application	Dilution
	ICC/IF	1:200 - 1:1000
	IHC-P	1:200 - 1:1000
Application Note	* The dilutions indicate recommended starting dilutions and the optimal dilutions or concentrations should be determined by the scientist.	

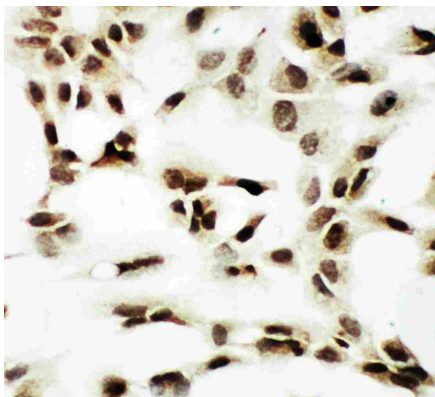
Properties

Form	Liquid
Purification	Affinity purification with immunogen.
Buffer	0.2% Na ₂ HPO ₄ , 0.9% NaCl, 0.05% Thimerosal, 0.05% Sodium azide and 5% BSA.
Preservative	0.05% Thimerosal and 0.05% Sodium azide
Stabilizer	5% BSA
Concentration	0.5 mg/ml
Storage instruction	For continuous use, store undiluted antibody at 2-8°C for up to a week. For long-term storage, aliquot and store at -20°C or below. Storage in frost free freezers is not recommended. Avoid repeated freeze/thaw cycles. Suggest spin the vial prior to opening. The antibody solution should be gently mixed before use.
Note	For laboratory research only, not for drug, diagnostic or other use.

Bioinformation

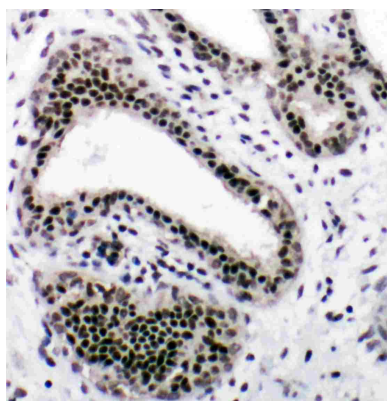
Gene Symbol	NRF1
Gene Full Name	nuclear respiratory factor 1
Background	This gene encodes a protein that homodimerizes and functions as a transcription factor which activates the expression of some key metabolic genes regulating cellular growth and nuclear genes required for respiration, heme biosynthesis, and mitochondrial DNA transcription and replication. The protein has also been associated with the regulation of neurite outgrowth. Alternative splicing results in multiple transcript variants. Confusion has occurred in bibliographic databases due to the shared symbol of NRF1 for this gene and for "nuclear factor (erythroid-derived 2)-like 1" which has an official symbol of NFE2L1. [provided by RefSeq, May 2014]
Function	Transcription factor that activates the expression of the EIF2S1 (EIF2-alpha) gene. Links the transcriptional modulation of key metabolic genes to cellular growth and development. Implicated in the control of nuclear genes required for respiration, heme biosynthesis, and mitochondrial DNA transcription and replication. [UniProt]
Calculated Mw	54 kDa
PTM	Phosphorylation enhances DNA binding. [UniProt]
Cellular Localization	Nucleus. [UniProt]

Images



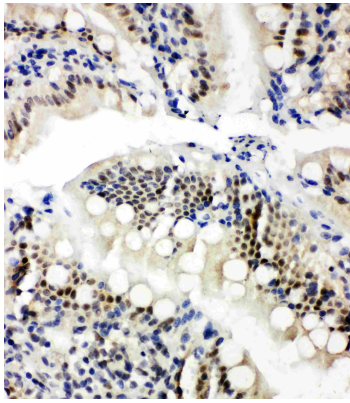
ARG40699 anti-NRF1 antibody ICC image

Immunocytochemistry: A549 cells stained with ARG40699 anti-NRF1 antibody.



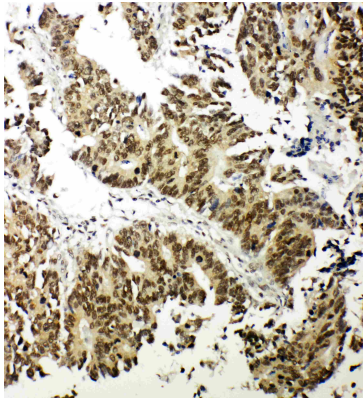
ARG40699 anti-NRF1 antibody IHC-P image

Immunohistochemistry: Paraffin-embedded Human mammary cancer tissue stained with ARG40699 anti-NRF1 antibody.



ARG40699 anti-NRF1 antibody IHC-P image

Immunohistochemistry: Paraffin-embedded Rat intestine tissue stained with ARG40699 anti-NRF1 antibody.



ARG40699 anti-NRF1 antibody IHC-P image

Immunohistochemistry: Paraffin-embedded Human intestinal cancer tissue stained with ARG40699 anti-NRF1 antibody.
