

## ARG40710 anti-Collagen I antibody

Package: 50 µg  
Store at: -20°C

### Summary

Product Description	Rabbit Polyclonal antibody recognizes Collagen I
Tested Reactivity	Ms, Rat
Predict Reactivity	Hm
Tested Application	IHC-P, WB
Host	Rabbit
Clonality	Polyclonal
Isotype	IgG
Target Name	Collagen I
Species	Mouse
Immunogen	Synthetic peptide corresponding to aa. 1185-1207 of Mouse Collagen I. (YDFSFLPQQPPQEKSQDGGRRYRA)
Conjugation	Un-conjugated
Alternate Names	O11; O12; O13; O14; EDSC; Collagen alpha-1(I) chain; Alpha-1 type I collagen

### Application Instructions

Application table	Application	Dilution
	IHC-P	1:200 - 1:1000
	WB	1:500 - 1:2000
Application Note	* The dilutions indicate recommended starting dilutions and the optimal dilutions or concentrations should be determined by the scientist.	

### Properties

Form	Liquid
Purification	Affinity purification with immunogen.
Buffer	0.2% Na <sub>2</sub> HPO <sub>4</sub> , 0.9% NaCl, 0.05% Sodium azide and 5% BSA.
Preservative	0.05% Sodium azide
Stabilizer	5% BSA
Concentration	0.5 mg/ml
Storage instruction	For continuous use, store undiluted antibody at 2-8°C for up to a week. For long-term storage, aliquot and store at -20°C or below. Storage in frost free freezers is not recommended. Avoid repeated freeze/thaw cycles. Suggest spin the vial prior to opening. The antibody solution should be gently mixed before use.
Note	For laboratory research only, not for drug, diagnostic or other use.

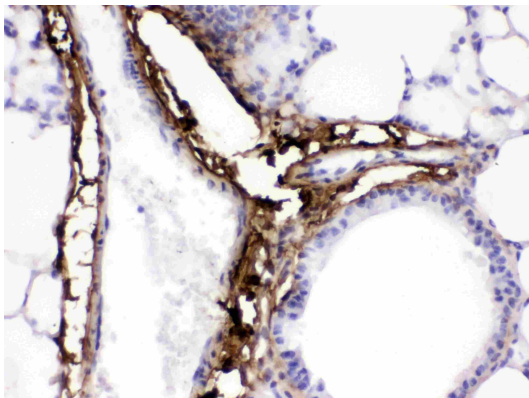
## Bioinformation

---

Gene Symbol	COL1A1
Gene Full Name	collagen, type I, alpha 1
Background	This gene encodes the pro-alpha1 chains of type I collagen whose triple helix comprises two alpha1 chains and one alpha2 chain. Type I is a fibril-forming collagen found in most connective tissues and is abundant in bone, cornea, dermis and tendon. Mutations in this gene are associated with osteogenesis imperfecta types I-IV, Ehlers-Danlos syndrome type VIIA, Ehlers-Danlos syndrome Classical type, Caffey Disease and idiopathic osteoporosis. Reciprocal translocations between chromosomes 17 and 22, where this gene and the gene for platelet-derived growth factor beta are located, are associated with a particular type of skin tumor called dermatofibrosarcoma protuberans, resulting from unregulated expression of the growth factor. Two transcripts, resulting from the use of alternate polyadenylation signals, have been identified for this gene. [provided by R. Dalgleish, Feb 2008]
Function	Type I collagen is a member of group I collagen (fibrillar forming collagen). [UniProt]
Highlight	Related products: <a href="#">Collagen I antibodies</a> ; <a href="#">Collagen I ELISA Kits</a> ; <a href="#">Collagen I Duos / Panels</a> ; <a href="#">Anti-Rabbit IgG secondary antibodies</a> ; Related news: <a href="#">New antibody panels for Myofibroblasts and CAFs</a>
Calculated Mw	139 kDa
PTM	Proline residues at the third position of the tripeptide repeating unit (G-X-P) are hydroxylated in some or all of the chains. Proline residues at the second position of the tripeptide repeating unit (G-P-X) are hydroxylated in some of the chains.  O-linked glycan consists of a Glc-Gal disaccharide bound to the oxygen atom of a post-translationally added hydroxyl group. [UniProt]
Cellular Localization	Secreted, extracellular space, extracellular matrix. [UniProt]

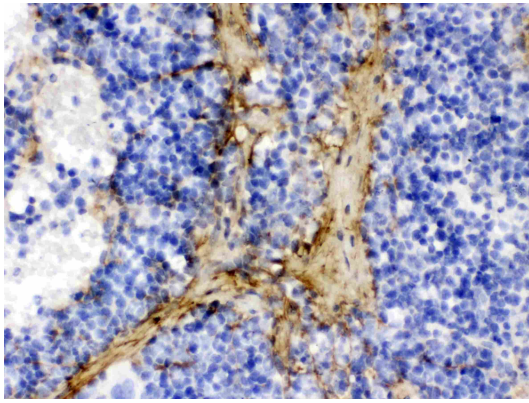
## Images

---



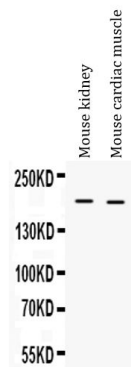
ARG40710 anti-Collagen I antibody IHC-P image

Immunohistochemistry: Paraffin-embedded Mouse lung tissue stained with ARG40710 anti-Collagen I antibody at 1 µg/ml dilution.



#### ARG40710 anti-Collagen I antibody IHC-P image

Immunohistochemistry: Paraffin-embedded Rat spleen tissue stained with ARG40710 anti-Collagen I antibody at 1  $\mu\text{g}/\text{ml}$  dilution.



#### ARG40710 anti-Collagen I antibody WB image

Western blot: Mouse kidney and Mouse cardiac muscle lysates stained with ARG40710 anti-Collagen I antibody at 0.5  $\mu\text{g}/\text{ml}$  dilution.