

## ARG40727 anti-BNP antibody

Package: 100 µl  
Store at: -20°C

### Summary

Product Description	Rabbit Polyclonal antibody recognizes BNP
Tested Reactivity	Hu, Ms, Rat
Tested Application	ICC/IF, IHC-P, WB
Host	Rabbit
Clonality	Polyclonal
Isotype	IgG
Target Name	BNP
Species	Human
Immunogen	Recombinant fusion protein corresponding to aa. 1-134 of Human BNP (NP_002512.1).
Conjugation	Un-conjugated
Alternate Names	4-27; Natriuretic peptides B; 1-28; 1-29; 5-32; BNP; 1-32; 1-30; BNP-32; 5-29; 2-31; 4-30; 4-31; 4-32; 3-29; Gamma-brain natriuretic peptide; 3-30; 5-31; 3-32; 4-29

### Application Instructions

Predict Reactivity Note	Human								
Application table	<table> <tr> <th>Application</th><th>Dilution</th></tr> <tr> <td>ICC/IF</td><td>1:50 - 1:200</td></tr> <tr> <td>IHC-P</td><td>1:50 - 1:200</td></tr> <tr> <td>WB</td><td>1:500 - 1:2000</td></tr> </table>	Application	Dilution	ICC/IF	1:50 - 1:200	IHC-P	1:50 - 1:200	WB	1:500 - 1:2000
Application	Dilution								
ICC/IF	1:50 - 1:200								
IHC-P	1:50 - 1:200								
WB	1:500 - 1:2000								
Application Note	* The dilutions indicate recommended starting dilutions and the optimal dilutions or concentrations should be determined by the scientist.								
Positive Control	Rat heart								

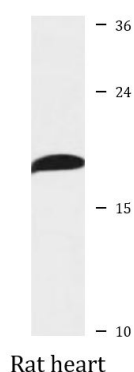
### Properties

Form	Liquid
Purification	Affinity purified.
Buffer	PBS (pH 7.3), 0.02% Sodium azide and 50% Glycerol.
Preservative	0.02% Sodium azide
Stabilizer	50% Glycerol
Storage instruction	For continuous use, store undiluted antibody at 2-8°C for up to a week. For long-term storage, aliquot and store at -20°C. Storage in frost free freezers is not recommended. Avoid repeated freeze/thaw cycles. Suggest spin the vial prior to opening. The antibody solution should be gently mixed before use.

## Bioinformation

Gene Symbol	NPPB
Gene Full Name	natriuretic peptide B
Background	This gene is a member of the natriuretic peptide family and encodes a secreted protein which functions as a cardiac hormone. The protein undergoes two cleavage events, one within the cell and a second after secretion into the blood. The protein's biological actions include natriuresis, diuresis, vasorelaxation, inhibition of renin and aldosterone secretion, and a key role in cardiovascular homeostasis. A high concentration of this protein in the bloodstream is indicative of heart failure. The protein also acts as an antimicrobial peptide with antibacterial and antifungal activity. Mutations in this gene have been associated with postmenopausal osteoporosis. [provided by RefSeq, Nov 2014]
Function	Cardiac hormone which may function as a paracrine antifibrotic factor in the heart. Also plays a key role in cardiovascular homeostasis through natriuresis, diuresis, vasorelaxation, and inhibition of renin and aldosterone secretion. Specifically binds and stimulates the cGMP production of the NPR1 receptor. Binds the clearance receptor NPR3. [UniProt]
Calculated Mw	15 kDa
PTM	The brain natriuretic peptide 32 form is cleaved at Pro-104 by the prolyl endopeptidase FAP (seprase) activity (in vitro). [UniProt]
Cellular Localization	Secreted. [UniProt]

## Images



ARG40727 anti-BNP antibody WB image

Western blot: 25 µg of Rat heart lysate stained with ARG40727 anti-BNP antibody at 1:1000 dilution.