

ARG40782 anti-CSRP2BP antibody

Package: 100 µl
Store at: -20°C

Summary

Product Description	Rabbit Polyclonal antibody recognizes CSRP2BP
Tested Reactivity	Hu, Rat
Tested Application	ICC/IF, WB
Host	Rabbit
Clonality	Polyclonal
Isotype	IgG
Target Name	CSRP2BP
Species	Human
Immunogen	Recombinant fusion protein corresponding to aa. 523-782 of Human CSRP2BP (NP_065397.3).
Conjugation	Un-conjugated
Alternate Names	ADA2A-containing complex subunit 2; CRP2BP; CRP2-binding partner; Cysteine-rich protein 2-binding protein; PRO1194; CSRP2-binding protein; KAT14; dJ717M23.1; ATAC2

Application Instructions

Application table	Application	Dilution
	ICC/IF	1:50 - 1:100
	WB	1:500 - 1:1000
Application Note	* The dilutions indicate recommended starting dilutions and the optimal dilutions or concentrations should be determined by the scientist.	
Positive Control	A375	
Observed Size	89 kDa	

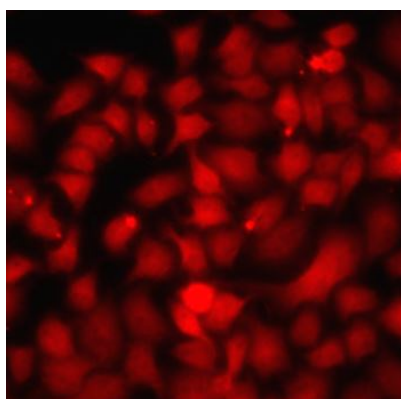
Properties

Form	Liquid
Purification	Affinity purified.
Buffer	PBS (pH 7.3), 0.02% Sodium azide and 50% Glycerol.
Preservative	0.02% Sodium azide
Stabilizer	50% Glycerol
Storage instruction	For continuous use, store undiluted antibody at 2-8°C for up to a week. For long-term storage, aliquot and store at -20°C. Storage in frost free freezers is not recommended. Avoid repeated freeze/thaw cycles. Suggest spin the vial prior to opening. The antibody solution should be gently mixed before use.
Note	For laboratory research only, not for drug, diagnostic or other use.

Bioinformation

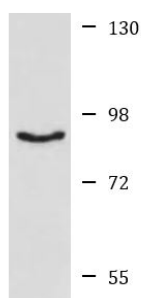
Gene Symbol	CSRP2BP
Gene Full Name	CSRP2 binding protein
Background	CSRP2 is a protein containing two LIM domains, which are double zinc finger motifs found in proteins of diverse function. CSRP2 and some related proteins are thought to act as protein adapters, bridging two or more proteins to form a larger protein complex. The protein encoded by this gene binds to one of the LIM domains of CSRP2 and contains an acetyltransferase domain. Although the encoded protein has been detected in the cytoplasm, it is predominantly a nuclear protein. Alternatively spliced transcript variants have been described. [provided by RefSeq, Jun 2011]
Function	Component of the ATAC complex, a complex with histone acetyltransferase activity on histones H3 and H4. May function as a scaffold for the ATAC complex to promote ATAC complex stability. Has also weak histone acetyltransferase activity toward histone H4. Required for the normal progression through G1 and G2/M phases of the cell cycle. [UniProt]
Calculated Mw	89 kDa
Cellular Localization	Cytoplasm, Nucleus. [UniProt]

Images



ARG40782 anti-CSRP2BP antibody ICC/IF image

Immunofluorescence: A549 cells stained with ARG40782 anti-CSRP2BP antibody.



A375

ARG40782 anti-CSRP2BP antibody WB image

Western blot: 25 µg of A375 cell lysate stained with ARG40782 anti-CSRP2BP antibody at 1:1000 dilution. Blocking buffer: 3% nonfat dry milk in TBST.