

ARG40784 anti-DPP10 antibody

Package: 100 µl
Store at: -20°C

Summary

Product Description	Rabbit Polyclonal antibody recognizes DPP10
Tested Reactivity	Hu, Ms
Tested Application	IHC-P, WB
Host	Rabbit
Clonality	Polyclonal
Isotype	IgG
Target Name	DPP10
Species	Human
Immunogen	KLH-conjugated synthetic peptide between aa. 150-177 of Human DPP10.
Conjugation	Un-conjugated
Alternate Names	Inactive dipeptidyl peptidase 10; Dipeptidyl peptidase-like protein 2; DPRP3; DPPY; DPRP-3; Dipeptidyl peptidase IV-related protein 3; DPP X; DPL2; Dipeptidyl peptidase X

Application Instructions

Application table	Application	Dilution
	IHC-P	1:50 - 1:100
	WB	1:1000
Application Note	* The dilutions indicate recommended starting dilutions and the optimal dilutions or concentrations should be determined by the scientist.	
Positive Control	Mouse liver	
Observed Size	~ 91 kDa	

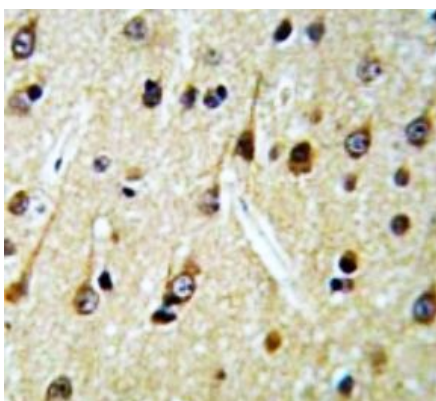
Properties

Form	Liquid
Purification	Purification with Protein A and immunogen peptide.
Buffer	PBS and 0.09% (W/V) Sodium azide.
Preservative	0.09% (W/V) Sodium azide.
Storage instruction	For continuous use, store undiluted antibody at 2-8°C for up to a week. For long-term storage, aliquot and store at -20°C or below. Storage in frost free freezers is not recommended. Avoid repeated freeze/thaw cycles. Suggest spin the vial prior to opening. The antibody solution should be gently mixed before use.
Note	For laboratory research only, not for drug, diagnostic or other use.

Bioinformation

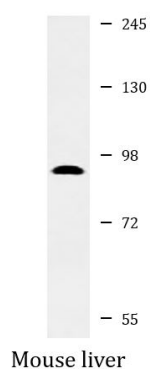
Gene Symbol	DPP10
Gene Full Name	dipeptidyl-peptidase 10 (non-functional)
Background	This gene encodes a single-pass type II membrane protein that is a member of the S9B family in clan SC of the serine proteases. This protein has no detectable protease activity, most likely due to the absence of the conserved serine residue normally present in the catalytic domain of serine proteases. However, it does bind specific voltage-gated potassium channels and alters their expression and biophysical properties. Mutations in this gene have been associated with asthma. Alternate transcriptional splice variants, encoding different isoforms, have been characterized. [provided by RefSeq, Jul 2008]
Function	Promotes cell surface expression of the potassium channel KCND2. Modulates the activity and gating characteristics of the potassium channel KCND2. Has no dipeptidyl aminopeptidase activity. [UniProt]
Calculated Mw	91 kDa
PTM	N-glycosylation is important for cell surface expression, specially at Asn-257, which is crucial. [UniProt]
Cellular Localization	Membrane; Single-pass type II membrane protein. [UniProt]

Images



ARG40784 anti-DPP10 antibody IHC-P image

Immunohistochemistry: Formalin-fixed and paraffin-embedded Human brain tissue stained with ARG40784 anti-DPP10 antibody.



ARG40784 anti-DPP10 antibody WB image

Western blot: 35 µg of Mouse liver lysate stained with ARG40784 anti-DPP10 antibody.