

## ARG40785 anti-Cannabinoid Receptor 2 antibody

Package: 100 µl  
Store at: -20°C

### Summary

Product Description	Rabbit Polyclonal antibody recognizes Cannabinoid Receptor 2
Tested Reactivity	Hu
Tested Application	FACS, IHC-P, WB
Host	Rabbit
Clonality	Polyclonal
Isotype	IgG
Target Name	Cannabinoid Receptor 2
Species	Human
Immunogen	KLH-conjugated synthetic peptide corresponding to aa. 329-356 of Human Cannabinoid Receptor 2.
Conjugation	Un-conjugated
Alternate Names	CB2; CB-2; Cannabinoid receptor 2; CX5; hCB2

### Application Instructions

Application table	Application	Dilution
	FACS	1:10 - 1:50
	IHC-P	1:10 - 1:50
	WB	1:1000
Application Note	* The dilutions indicate recommended starting dilutions and the optimal dilutions or concentrations should be determined by the scientist.	

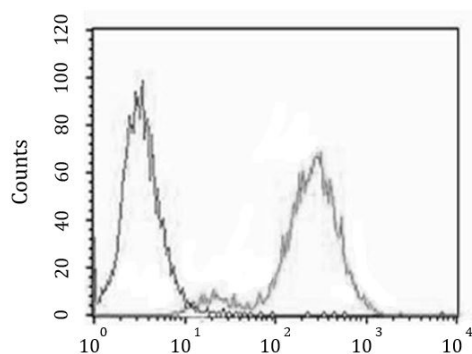
### Properties

Form	Liquid
Purification	Purification with Protein A and immunogen peptide.
Buffer	PBS and 0.09% (W/V) Sodium azide.
Preservative	0.09% (W/V) Sodium azide.
Storage instruction	For continuous use, store undiluted antibody at 2-8°C for up to a week. For long-term storage, aliquot and store at -20°C or below. Storage in frost free freezers is not recommended. Avoid repeated freeze/thaw cycles. Suggest spin the vial prior to opening. The antibody solution should be gently mixed before use.
Note	For laboratory research only, not for drug, diagnostic or other use.

### Bioinformation

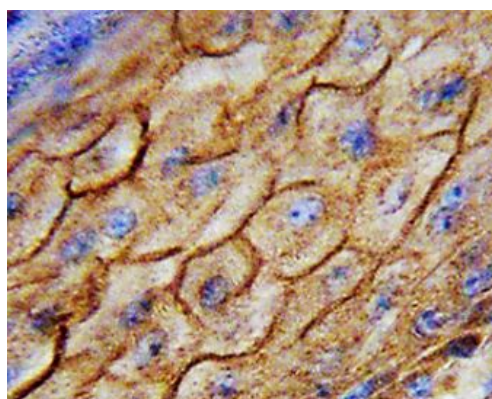
Gene Symbol	CNR2
Gene Full Name	cannabinoid receptor 2 (macrophage)
Background	The cannabinoid delta-9-tetrahydrocannabinol is the principal psychoactive ingredient of marijuana. The proteins encoded by this gene and the cannabinoid receptor 1 (brain) (CNR1) gene have the characteristics of a guanine nucleotide-binding protein (G-protein)-coupled receptor for cannabinoids. They inhibit adenylate cyclase activity in a dose-dependent, stereoselective, and pertussis toxin-sensitive manner. These proteins have been found to be involved in the cannabinoid-induced CNS effects (including alterations in mood and cognition) experienced by users of marijuana. The cannabinoid receptors are members of family 1 of the G-protein-coupled receptors. [provided by RefSeq, Jul 2008]
Function	Heterotrimeric G protein-coupled receptor for endocannabinoid 2-arachidonoylglycerol mediating inhibition of adenylate cyclase. May function in inflammatory response, nociceptive transmission and bone homeostasis. [UniProt]
Calculated Mw	40 kDa
PTM	Constitutively phosphorylated on Ser-352; phosphorylation increases cell internalization and desensitizes the receptor. [UniProt]
Cellular Localization	Cell membrane; Multi-pass membrane protein. Cell projection, dendrite. Perikaryon. Note=Localizes to apical dendrite of pyramidal neurons. [UniProt]

## Images



**ARG40785 anti-Cannabinoid Receptor 2 antibody FACS image**

Flow Cytometry: Jurkat cells stained with ARG40785 anti-Cannabinoid Receptor 2 antibody at 1:25 dilution (right histogram) or isotype control antibody (left histogram), followed by incubation with Alexa Fluor® 488 labelled secondary antibody.



**ARG40785 anti-Cannabinoid Receptor 2 antibody IHC-P image**

Immunohistochemistry: Formalin-fixed and paraffin-embedded Human skin carcinoma tissue stained with ARG40785 anti-Cannabinoid Receptor 2 antibody.