

ARG40791 anti-GNAT2 antibody

Package: 100 µl
Store at: -20°C

Summary

Product Description	Rabbit Polyclonal antibody recognizes GNAT2
Tested Reactivity	Hu
Predict Reactivity	Ms
Tested Application	IHC-P, WB
Host	Rabbit
Clonality	Polyclonal
Isotype	IgG
Target Name	GNAT2
Species	Human
Immunogen	KLH conjugated synthetic peptide between aa. 140-169 of Human GNAT2.
Conjugation	Un-conjugated
Alternate Names	ACHM4; GNATC; Guanine nucleotide-binding protein G(t) subunit alpha-2; Transducin alpha-2 chain

Application Instructions

Application table	Application	Dilution
	IHC-P	1:10 - 1:50
	WB	1:1000
Application Note	* The dilutions indicate recommended starting dilutions and the optimal dilutions or concentrations should be determined by the scientist.	

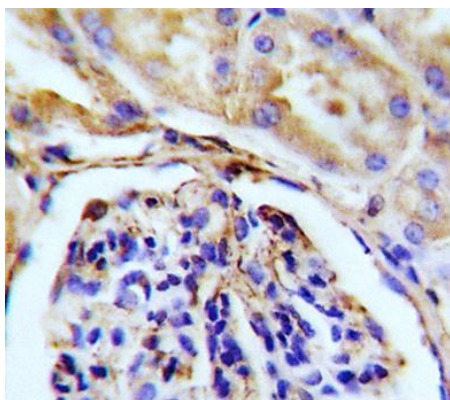
Properties

Form	Liquid
Purification	Purification with Protein A and immunogen peptide.
Buffer	PBS and 0.09% (W/V) Sodium azide.
Preservative	0.09% (W/V) Sodium azide.
Storage instruction	For continuous use, store undiluted antibody at 2-8°C for up to a week. For long-term storage, aliquot and store at -20°C or below. Storage in frost free freezers is not recommended. Avoid repeated freeze/thaw cycles. Suggest spin the vial prior to opening. The antibody solution should be gently mixed before use.
Note	For laboratory research only, not for drug, diagnostic or other use.

Bioinformation

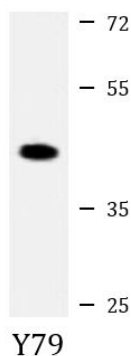
Gene Symbol	GNAT2
Gene Full Name	guanine nucleotide binding protein (G protein), alpha transducing activity polypeptide 2
Background	Transducin is a 3-subunit guanine nucleotide-binding protein (G protein) which stimulates the coupling of rhodopsin and cGMP-phosphodiesterase during visual impulses. The transducin alpha subunits in rods and cones are encoded by separate genes. This gene encodes the alpha subunit in cones. [provided by RefSeq, Jul 2008]
Function	Guanine nucleotide-binding proteins (G proteins) are involved as modulators or transducers in various transmembrane signaling systems. Transducin is an amplifier and one of the transducers of a visual impulse that performs the coupling between rhodopsin and cGMP-phosphodiesterase. [UniProt]
Calculated Mw	40 kDa

Images



ARG40791 anti-GNAT2 antibody IHC-P image

Immunohistochemistry: Formalin-fixed and paraffin-embedded Human kidney tissue stained with ARG40791 anti-GNAT2 antibody.



ARG40791 anti-GNAT2 antibody WB image

Western blot: 20 µg of Y79 cell lysate stained with ARG40791 anti-GNAT2 antibody at 1:1000 dilution.