

ARG40803 anti-PDE6B antibody

Package: 100 µl
Store at: -20°C

Summary

Product Description	Rabbit Polyclonal antibody recognizes PDE6B
Tested Reactivity	Hu, Ms, Rat
Tested Application	IHC-P, WB
Host	Rabbit
Clonality	Polyclonal
Isotype	IgG
Target Name	PDE6B
Species	Human
Immunogen	Recombinant fusion protein corresponding to aa. 1-190 of Human PDE6B (NP_001138763.1).
Conjugation	Un-conjugated
Alternate Names	Rod cGMP-specific 3',5'-cyclic phosphodiesterase subunit beta; rd1; RP40; CSNBAD2; PDEB; CSNB3; GMP-PDE beta; EC 3.1.4.35

Application Instructions

Application table	Application	Dilution
	IHC-P	1:50 - 1:200
	WB	1:500 - 1:2000
Application Note	* The dilutions indicate recommended starting dilutions and the optimal dilutions or concentrations should be determined by the scientist.	

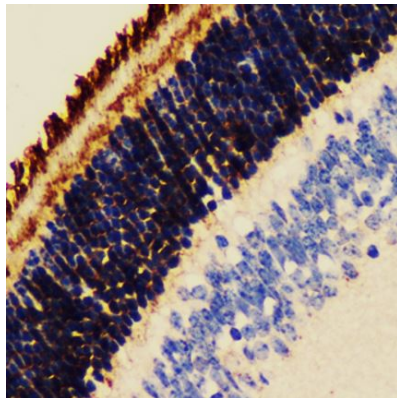
Properties

Form	Liquid
Purification	Affinity purified.
Buffer	PBS (pH 7.3), 0.02% Sodium azide and 50% Glycerol.
Preservative	0.02% Sodium azide
Stabilizer	50% Glycerol
Storage instruction	For continuous use, store undiluted antibody at 2-8°C for up to a week. For long-term storage, aliquot and store at -20°C. Storage in frost free freezers is not recommended. Avoid repeated freeze/thaw cycles. Suggest spin the vial prior to opening. The antibody solution should be gently mixed before use.
Note	For laboratory research only, not for drug, diagnostic or other use.

Bioinformation

Gene Symbol	PDE6B
Gene Full Name	phosphodiesterase 6B, cGMP-specific, rod, beta
Background	Photon absorption triggers a signaling cascade in rod photoreceptors that activates cGMP phosphodiesterase (PDE), resulting in the rapid hydrolysis of cGMP, closure of cGMP-gated cation channels, and hyperpolarization of the cell. PDE is a peripheral membrane heterotrimeric enzyme made up of alpha, beta, and gamma subunits. This gene encodes the beta subunit. Mutations in this gene result in retinitis pigmentosa and autosomal dominant congenital stationary night blindness. Multiple transcript variants encoding different isoforms have been found for this gene. [provided by RefSeq, Feb 2009]
Function	This protein participates in processes of transmission and amplification of the visual signal. Necessary for the formation of a functional phosphodiesterase holoenzyme. [UniProt]
Calculated Mw	98 kDa
Cellular Localization	Membrane; Lipid-anchor. [UniProt]

Images



ARG40803 anti-PDE6B antibody IHC-P image

Immunohistochemistry: Paraffin-embedded Mouse retina stained with ARG40803 anti-PDE6B antibody at 1:200 dilution.
