

ARG40827 anti-C Reactive Protein antibody

Package: 50 µg
Store at: -20°C

Summary

| | |
|---------------------|---|
| Product Description | Rabbit Polyclonal antibody recognizes C Reactive Protein |
| Tested Reactivity | Rat |
| Tested Application | IHC-P, WB |
| Host | Rabbit |
| Clonality | Polyclonal |
| Isotype | IgG |
| Target Name | C Reactive Protein |
| Species | Rat |
| Immunogen | Recombinant protein corresponding to H20-S230 of Rat CRP. |
| Conjugation | Un-conjugated |
| Alternate Names | 1-205; PTX1; C-reactive protein |

Application Instructions

| Application table | Application | Dilution |
|-------------------|---|----------------|
| | IHC-P | 1:200 - 1:1000 |
| | WB | 1:500 - 1:2000 |
| Application Note | IHC-P: Antigen Retrieval: Heat mediation was performed in Citrate buffer (pH 6.0, epitope retrieval solution) for 20 min. * The dilutions indicate recommended starting dilutions and the optimal dilutions or concentrations should be determined by the scientist. | |

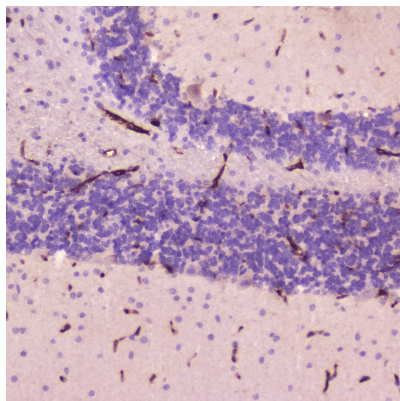
Properties

| | |
|---------------------|--|
| Form | Liquid |
| Buffer | 0.2% Na ₂ HPO ₄ , 0.9% NaCl, 0.05% Sodium azide and 4% Trehalose. |
| Preservative | 0.05% Sodium azide |
| Stabilizer | 4% Trehalose |
| Concentration | 0.5 mg/ml |
| Storage instruction | For continuous use, store undiluted antibody at 2-8°C for up to a week. For long-term storage, aliquot and store at -20°C or below. Storage in frost free freezers is not recommended. Avoid repeated freeze/thaw cycles. Suggest spin the vial prior to opening. The antibody solution should be gently mixed before use. |
| Note | For laboratory research only, not for drug, diagnostic or other use. |

Bioinformation

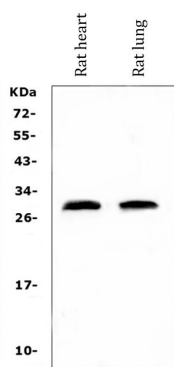
| | |
|-----------------------|--|
| Gene Symbol | CRP |
| Gene Full Name | C-reactive protein, pentraxin-related |
| Background | The protein encoded by this gene belongs to the pentaxin family. It is involved in several host defense related functions based on its ability to recognize foreign pathogens and damaged cells of the host and to initiate their elimination by interacting with humoral and cellular effector systems in the blood. Consequently, the level of this protein in plasma increases greatly during acute phase response to tissue injury, infection, or other inflammatory stimuli. [provided by RefSeq, Sep 2009] |
| Function | Displays several functions associated with host defense: it promotes agglutination, bacterial capsular swelling, phagocytosis and complement fixation through its calcium-dependent binding to phosphorylcholine. Can interact with DNA and histones and may scavenge nuclear material released from damaged circulating cells. [UniProt] |
| Calculated Mw | 25 kDa |
| Cellular Localization | Secreted. [UniProt] |

Images



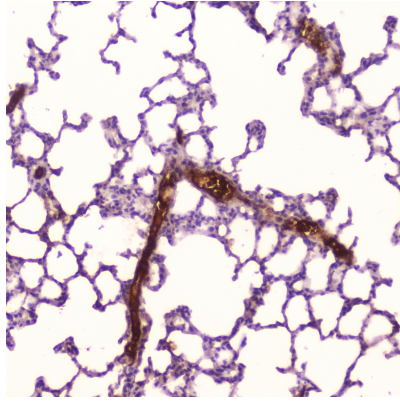
ARG40827 anti-C Reactive Protein antibody IHC-P image

Immunohistochemistry: Paraffin-embedded Rat cerebellum tissue. Antigen Retrieval: Heat mediation was performed in Citrate buffer (pH 6.0, epitope retrieval solution) for 20 min. The tissue section was blocked with 10% goat serum. The tissue section was then stained with ARG40827 anti-C Reactive Protein antibody at 2 $\mu\text{g}/\text{ml}$, overnight at 4°C.



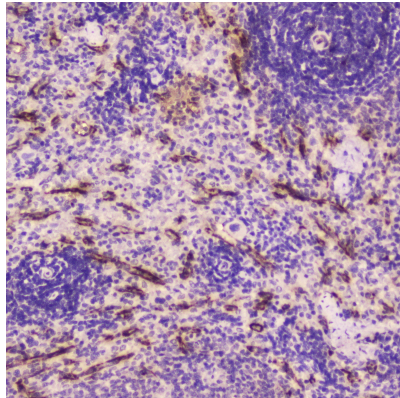
ARG40827 anti-C Reactive Protein antibody WB image

Western blot: 50 μg of samples under reducing conditions. Rat heart and Rat lung tissue lysates stained with ARG40827 anti-C Reactive Protein antibody at 0.5 $\mu\text{g}/\text{ml}$, overnight at 4°C.



ARG40827 anti-C Reactive Protein antibody IHC-P image

Immunohistochemistry: Paraffin-embedded Rat lung tissue. Antigen Retrieval: Heat mediation was performed in Citrate buffer (pH 6.0, epitope retrieval solution) for 20 min. The tissue section was blocked with 10% goat serum. The tissue section was then stained with ARG40827 anti-C Reactive Protein antibody at 2 $\mu\text{g}/\text{ml}$, overnight at 4°C.



ARG40827 anti-C Reactive Protein antibody IHC-P image

Immunohistochemistry: Paraffin-embedded Rat spleen tissue. Antigen Retrieval: Heat mediation was performed in Citrate buffer (pH 6.0, epitope retrieval solution) for 20 min. The tissue section was blocked with 10% goat serum. The tissue section was then stained with ARG40827 anti-C Reactive Protein antibody at 2 $\mu\text{g}/\text{ml}$, overnight at 4°C.