

ARG40864
anti-C Reactive Protein antibodyPackage: 100 µl
Store at: -20°C

Summary

Product Description	Rabbit Polyclonal antibody recognizes C Reactive Protein
Tested Reactivity	Hu
Tested Application	IHC-P, IP, WB
Host	Rabbit
Clonality	Polyclonal
Isotype	IgG
Target Name	C Reactive Protein
Species	Human
Immunogen	Synthetic peptide derived from Human C Reactive Protein.
Conjugation	Un-conjugated
Alternate Names	1-205; PTX1; C-reactive protein

Application Instructions

Application table	Application	Dilution
	IHC-P	1:500 - 1:1000
	IP	1:50
	WB	1:1000 - 1:2000

Application Note * The dilutions indicate recommended starting dilutions and the optimal dilutions or concentrations should be determined by the scientist.

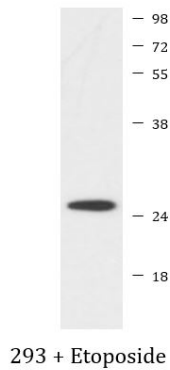
Properties

Form	Liquid
Purification	Affinity purified.
Buffer	PBS (pH 7.4), 150 mM NaCl, 0.02% Sodium azide and 50% Glycerol.
Preservative	0.02% Sodium azide
Stabilizer	50% Glycerol
Storage instruction	For continuous use, store undiluted antibody at 2-8°C for up to a week. For long-term storage, aliquot and store at -20°C. Storage in frost free freezers is not recommended. Avoid repeated freeze/thaw cycles. Suggest spin the vial prior to opening. The antibody solution should be gently mixed before use.
Note	For laboratory research only, not for drug, diagnostic or other use.

Bioinformation

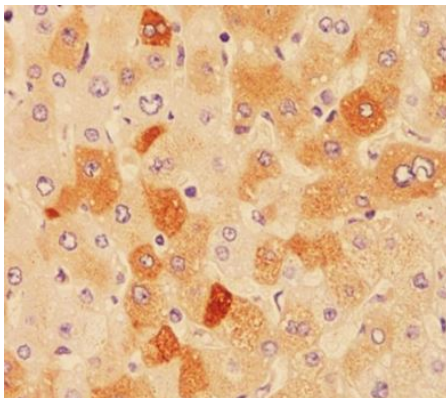
Gene Symbol	CRP
Gene Full Name	C-reactive protein, pentraxin-related
Background	The protein encoded by this gene belongs to the pentaxin family. It is involved in several host defense related functions based on its ability to recognize foreign pathogens and damaged cells of the host and to initiate their elimination by interacting with humoral and cellular effector systems in the blood. Consequently, the level of this protein in plasma increases greatly during acute phase response to tissue injury, infection, or other inflammatory stimuli. [provided by RefSeq, Sep 2009]
Function	Displays several functions associated with host defense: it promotes agglutination, bacterial capsular swelling, phagocytosis and complement fixation through its calcium-dependent binding to phosphorylcholine. Can interact with DNA and histones and may scavenge nuclear material released from damaged circulating cells. [UniProt]
Calculated Mw	25 kDa
Cellular Localization	Secreted. [UniProt]

Images



ARG40864 anti-C Reactive Protein antibody WB image

Western blot: 293 cells treated with Etoposide and stained with ARG40864 anti-C Reactive Protein antibody.



ARG40864 anti-C Reactive Protein antibody IHC-P image

Immunohistochemistry: Paraffin-embedded Human liver tissue stained with ARG40864 anti-C Reactive Protein antibody.