

ARG40881 anti-ARGLU1 antibody

Package: 100 µl
Store at: -20°C

Summary

Product Description	Rabbit Polyclonal antibody recognizes ARGLU1
Tested Reactivity	Hu
Predict Reactivity	Bov
Tested Application	FACS, IHC-P, WB
Host	Rabbit
Clonality	Polyclonal
Isotype	IgG
Target Name	ARGLU1
Species	Human
Immunogen	KLH-conjugated synthetic peptide corresponding to aa. 48-74 of Human ARGLU1.
Conjugation	Un-conjugated
Alternate Names	Arginine and glutamate-rich protein 1

Application Instructions

Application table	Application	Dilution
	FACS	1:10 - 1:50
	IHC-P	1:50 - 1:100
	WB	1:1000
Application Note	* The dilutions indicate recommended starting dilutions and the optimal dilutions or concentrations should be determined by the scientist.	
Observed Size	~ 38 kDa	

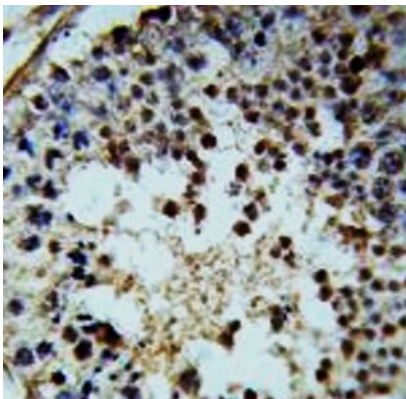
Properties

Form	Liquid
Purification	Purification with Protein A and immunogen peptide.
Buffer	PBS and 0.09% (W/V) Sodium azide.
Preservative	0.09% (W/V) Sodium azide.
Storage instruction	For continuous use, store undiluted antibody at 2-8°C for up to a week. For long-term storage, aliquot and store at -20°C or below. Storage in frost free freezers is not recommended. Avoid repeated freeze/thaw cycles. Suggest spin the vial prior to opening. The antibody solution should be gently mixed before use.
Note	For laboratory research only, not for drug, diagnostic or other use.

Bioinformation

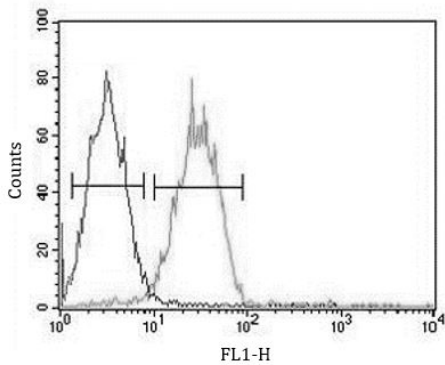
Gene Symbol	ARGLU1
Gene Full Name	arginine and glutamate rich 1
Function	Required for the estrogen-dependent expression of ESR1 target genes. Can act in cooperation with MED1. [UniProt]
Calculated Mw	33 kDa
Cellular Localization	Nucleus. Note=Recruited, in an estrogen-dependent manner, to ESR1 target gene promoters. Colocalizes with MED1. [UniProt]

Images



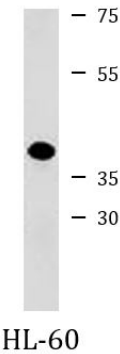
ARG40881 anti-ARGLU1 antibody IHC-P image

Immunohistochemistry: Formalin-fixed and paraffin-embedded Human testis tissue stained with ARG40881 anti-ARGLU1 antibody.



ARG40881 anti-ARGLU1 antibody FACS image

Flow Cytometry: Jurkat cells stained with ARG40881 anti-ARGLU1 antibody (right histogram) or without primary antibody as control (left histogram), followed by incubation with FITC labelled secondary antibody.



ARG40881 anti-ARGLU1 antibody WB image

Western blot: 35 µg of HL-60 cell lysate stained with ARG40881 anti-ARGLU1 antibody.