

## ARG40902 anti-Cytokeratin 15 antibody

Package: 100 µl  
Store at: -20°C

### Summary

Product Description	Rabbit Polyclonal antibody recognizes Cytokeratin 15
Tested Reactivity	Hu, Ms
Tested Application	FACS, IHC-P, WB
Host	Rabbit
Clonality	Polyclonal
Isotype	IgG
Target Name	Cytokeratin 15
Species	Human
Immunogen	Synthetic peptide derived from Human Cytokeratin 15.
Conjugation	Un-conjugated
Alternate Names	CK-15; K15; Keratin, type I cytoskeletal 15; Cytokeratin-15; Keratin-15; K1CO; CK15

### Application Instructions

Application table	Application	Dilution
	FACS	1:50
	IHC-P	1:50 - 1:200
	WB	1:1000 - 1:2000
Application Note	* The dilutions indicate recommended starting dilutions and the optimal dilutions or concentrations should be determined by the scientist.	
Positive Control	Human fetal thymus	

### Properties

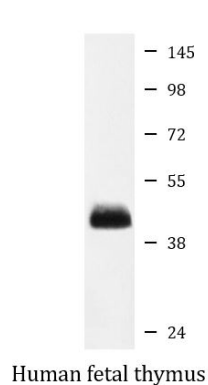
Form	Liquid
Purification	Affinity purified.
Buffer	PBS (pH 7.4), 150 mM NaCl, 0.02% Sodium azide and 50% Glycerol.
Preservative	0.02% Sodium azide
Stabilizer	50% Glycerol
Storage instruction	For continuous use, store undiluted antibody at 2-8°C for up to a week. For long-term storage, aliquot and store at -20°C. Storage in frost free freezers is not recommended. Avoid repeated freeze/thaw cycles. Suggest spin the vial prior to opening. The antibody solution should be gently mixed before use.
Note	For laboratory research only, not for drug, diagnostic or other use.

## Bioinformation

---

Gene Symbol	KRT15
Gene Full Name	keratin 15, type I
Background	The protein encoded by this gene is a member of the keratin gene family. The keratins are intermediate filament proteins responsible for the structural integrity of epithelial cells and are subdivided into cytokeratins and hair keratins. Most of the type I cytokeratins consist of acidic proteins which are arranged in pairs of heterotypic keratin chains and are clustered in a region on chromosome 17q21.2. [provided by RefSeq, Jul 2008]
Calculated Mw	49 kDa

## Images



ARG40902 anti-Cytokeratin 15 antibody WB image

Western blot: Human fetal thymus lysate stained with ARG40902 anti-Cytokeratin 15 antibody.