

ARG40927 anti-CD104 / Integrin beta 4 antibody

Package: 50 µg
Store at: -20°C

Summary

Product Description	Rabbit Polyclonal antibody recognizes CD104 / Integrin beta 4
Tested Reactivity	Hu
Tested Application	FACS, IHC-P, WB
Host	Rabbit
Clonality	Polyclonal
Isotype	IgG
Target Name	CD104 / Integrin beta 4
Species	Human
Immunogen	Recombinant protein corresponding to N28-A266 of Human Integrin beta 4.
Conjugation	Un-conjugated
Alternate Names	Integrin beta-4; GP150; CD antigen CD104; CD104

Application Instructions

Application table	Application	Dilution
	FACS	1 - 3 µg/10 ⁶ cells
	IHC-P	1:200 - 1:1000
	WB	1:500 - 1:2000
Application Note	IHC-P: Antigen Retrieval: Heat mediation was performed in Citrate buffer (pH 6.0, epitope retrieval solution) for 20 min. * The dilutions indicate recommended starting dilutions and the optimal dilutions or concentrations should be determined by the scientist.	

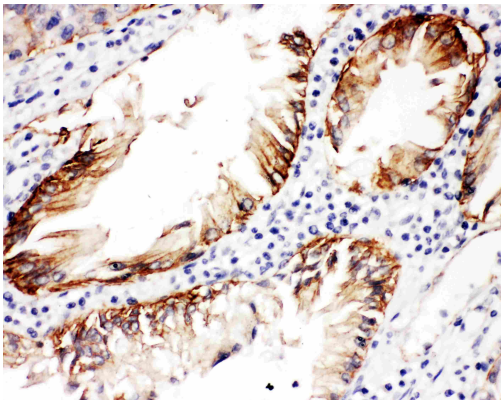
Properties

Form	Liquid
Purification	Affinity purification with immunogen.
Buffer	0.2% Na ₂ HPO ₄ , 0.9% NaCl, 0.05% Sodium azide and 5% BSA.
Preservative	0.05% Sodium azide
Stabilizer	5% BSA
Concentration	0.5 mg/ml
Storage instruction	For continuous use, store undiluted antibody at 2-8°C for up to a week. For long-term storage, aliquot and store at -20°C or below. Storage in frost free freezers is not recommended. Avoid repeated freeze/thaw cycles. Suggest spin the vial prior to opening. The antibody solution should be gently mixed before use.

Bioinformation

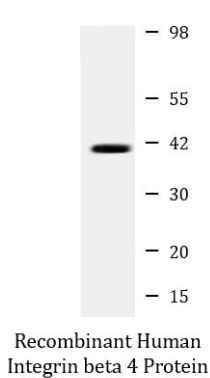
Gene Symbol	ITGB4
Gene Full Name	integrin, beta 4
Background	Integrins are heterodimers comprised of alpha and beta subunits, that are noncovalently associated transmembrane glycoprotein receptors. Different combinations of alpha and beta polypeptides form complexes that vary in their ligand-binding specificities. Integrins mediate cell-matrix or cell-cell adhesion, and transduced signals that regulate gene expression and cell growth. This gene encodes the integrin beta 4 subunit, a receptor for the laminins. This subunit tends to associate with alpha 6 subunit and is likely to play a pivotal role in the biology of invasive carcinoma. Mutations in this gene are associated with epidermolysis bullosa with pyloric atresia. Multiple alternatively spliced transcript variants encoding distinct isoforms have been found for this gene. [provided by RefSeq, Jul 2008]
Function	Integrin alpha-6/beta-4 is a receptor for laminin. Plays a critical structural role in the hemidesmosome of epithelial cells. Is required for the regulation of keratinocyte polarity and motility. [UniProt]
Calculated Mw	202 kDa
PTM	Palmitoylated by DHHC3 at several cysteines of the membrane-proximal region, enhancing stability and cell surface expression. Palmitoylation also promotes secondary association with tetraspanins. [UniProt]
Cellular Localization	Cell membrane; Single-pass type I membrane protein. Cell membrane; Lipid-anchor. Cell junction, hemidesmosome. Note=Colocalizes with DST at the leading edge of migrating keratinocytes. [UniProt]

Images



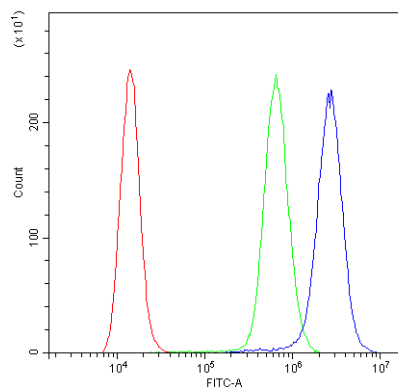
ARG40927 anti-CD104 / Integrin beta 4 antibody IHC-P image

Immunohistochemistry: Paraffin-embedded Human intestinal cancer tissue. Antigen Retrieval: Heat mediation was performed in Citrate buffer (pH 6.0, epitope retrieval solution) for 20 min. The tissue section was blocked with 10% goat serum. The tissue section was then stained with ARG40927 anti-CD104 / Integrin beta 4 antibody at 1 µg/ml, overnight at 4°C.



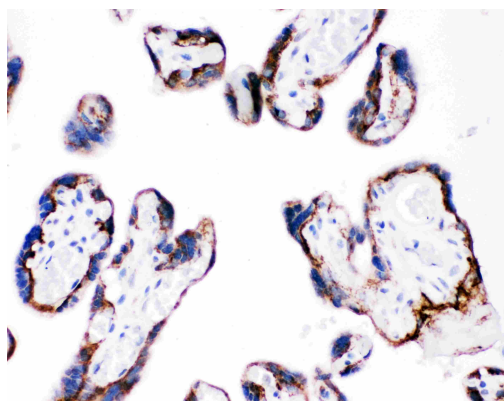
ARG40927 anti-CD104 / Integrin beta 4 antibody WB image

Western blot: 0.5 ng of Recombinant Human Integrin beta 4 Protein stained with ARG40927 anti-CD104 / Integrin beta 4 antibody at 0.5 µg/ml, overnight at 4°C.



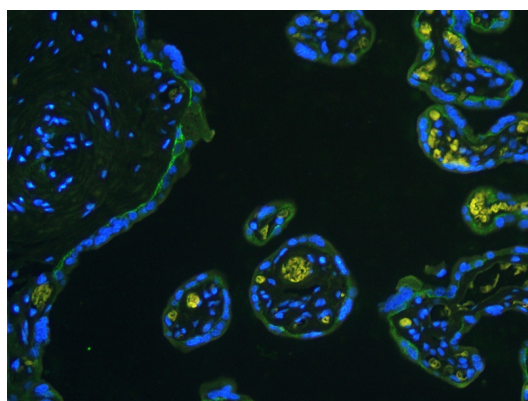
ARG40927 anti-CD104 / Integrin beta 4 antibody FACS image

Flow Cytometry: A431 cells were blocked with 10% normal goat serum and then stained with ARG40927 anti-CD104 / Integrin beta 4 antibody (blue) at $1 \mu\text{g}/10^6$ cells for 30 min at 20°C , followed by incubation with DyLight[®]488 labelled secondary antibody. Isotype control antibody (green) was Rabbit IgG ($1 \mu\text{g}/10^6$ cells) used under the same conditions. Unlabelled sample (red) was also used as a control.



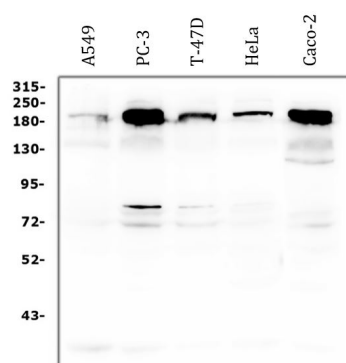
ARG40927 anti-CD104 / Integrin beta 4 antibody IHC-P image

Immunohistochemistry: Paraffin-embedded Human placenta tissue. Antigen Retrieval: Heat mediation was performed in Citrate buffer (pH 6.0, epitope retrieval solution) for 20 min. The tissue section was blocked with 10% goat serum. The tissue section was then stained with ARG40927 anti-CD104 / Integrin beta 4 antibody at $1 \mu\text{g}/\text{ml}$, overnight at 4°C .



ARG40927 anti-CD104 / Integrin beta 4 antibody IHC-P image

Immunohistochemistry: Paraffin-embedded Human placenta tissue. Antigen Retrieval: Heat mediation was performed in Citrate buffer (pH 6.0, epitope retrieval solution) for 20 min. The tissue section was blocked with 10% goat serum. The tissue section was then stained with ARG40927 anti-CD104 / Integrin beta 4 antibody at $1 \mu\text{g}/\text{ml}$, overnight at 4°C .



ARG40927 anti-CD104 / Integrin beta 4 antibody WB image

Western blot: $50 \mu\text{g}$ of samples under reducing conditions. A549, PC-3, T-47D, HeLa and Caco-2 whole cell lysates stained with ARG40927 anti-CD104 / Integrin beta 4 antibody at $0.5 \mu\text{g}/\text{ml}$, overnight at 4°C .