

ARG40990 anti-Cyclophilin B antibody

Package: 50 µg
Store at: -20°C

Summary

Product Description	Rabbit Polyclonal antibody recognizes Cyclophilin B
Tested Reactivity	Hu, Ms, Rat
Predict Reactivity	Hm
Tested Application	IHC-P, WB
Host	Rabbit
Clonality	Polyclonal
Isotype	IgG
Target Name	Cyclophilin B
Species	Human
Immunogen	Synthetic peptide corresponding to aa. 176-196 of Human Cyclophilin B (MEVVRKVESTKTDSRDKPLKD).
Conjugation	Un-conjugated
Alternate Names	HEL-S-39; CYPB; PPIase B; CYP-S1; Cyclophilin B; SCYLP; EC 5.2.1.8; S-cyclophilin; OI9; Rotamase B; Peptidyl-prolyl cis-trans isomerase B

Application Instructions

Application table	Application	Dilution
	IHC-P	1:200 - 1:1000
	WB	1:500 - 1:2000
Application Note	IHC-P: Antigen Retrieval: Heat mediation was performed in Citrate buffer (pH 6.0, epitope retrieval solution) for 20 min. * The dilutions indicate recommended starting dilutions and the optimal dilutions or concentrations should be determined by the scientist.	

Properties

Form	Liquid
Purification	Affinity purification with immunogen.
Buffer	0.2% Na ₂ HPO ₄ , 0.9% NaCl, 0.05% Thimerosal, 0.05% Sodium azide and 5% BSA.
Preservative	0.05% Thimerosal and 0.05% Sodium azide
Stabilizer	5% BSA
Concentration	0.5 mg/ml
Storage instruction	For continuous use, store undiluted antibody at 2-8°C for up to a week. For long-term storage, aliquot and store at -20°C or below. Storage in frost free freezers is not recommended. Avoid repeated freeze/thaw cycles. Suggest spin the vial prior to opening. The antibody solution should be gently mixed

before use.

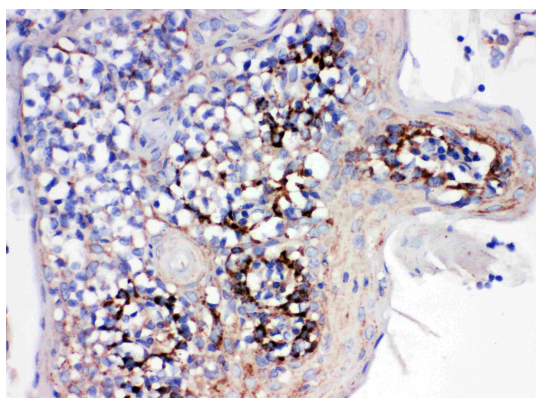
Note

For laboratory research only, not for drug, diagnostic or other use.

Bioinformation

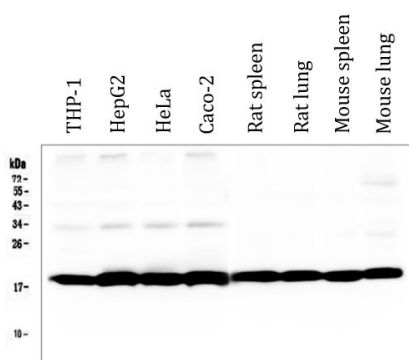
Gene Symbol	PPIB
Gene Full Name	peptidylprolyl isomerase B (cyclophilin B)
Background	The protein encoded by this gene is a cyclosporine-binding protein and is mainly located within the endoplasmic reticulum. It is associated with the secretory pathway and released in biological fluids. This protein can bind to cells derived from T- and B-lymphocytes, and may regulate cyclosporine A-mediated immunosuppression. Variants have been identified in this protein that give rise to recessive forms of osteogenesis imperfecta. [provided by RefSeq, Oct 2009]
Function	PPIases accelerate the folding of proteins. It catalyzes the cis-trans isomerization of proline imidic peptide bonds in oligopeptides. [UniProt]
Calculated Mw	24 kDa
Cellular Localization	Endoplasmic reticulum lumen. Melanosome. Note=Identified by mass spectrometry in melanosome fractions from stage I to stage IV (PubMed:17081065). [UniProt]

Images



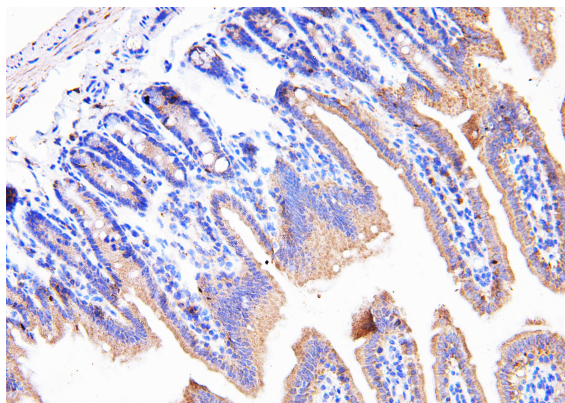
ARG40990 anti-Cyclophilin B antibody IHC-P image

Immunohistochemistry: Paraffin-embedded Human tonsil tissue. Antigen Retrieval: Heat mediation was performed in Citrate buffer (pH 6.0, epitope retrieval solution) for 20 min. The tissue section was blocked with 10% goat serum. The tissue section was then stained with ARG40990 anti-Cyclophilin B antibody at 1 µg/ml dilution, overnight at 4°C.



ARG40990 anti-Cyclophilin B antibody WB image

Western blot: 50 µg of samples under reducing conditions. THP-1, HepG2, HeLa, Caco-2, Rat spleen, Rat lung, Mouse spleen and Mouse lung lysates stained with ARG40990 anti-Cyclophilin B antibody at 0.5 µg/ml, overnight at 4°C.



ARG40990 anti-Cyclophilin B antibody IHC-P image

Immunohistochemistry: Paraffin-embedded Mouse intestine tissue. Antigen Retrieval: Heat mediation was performed in Citrate buffer (pH 6.0, epitope retrieval solution) for 20 min. The tissue section was blocked with 10% goat serum. The tissue section was then stained with ARG40990 anti-Cyclophilin B antibody at 1 µg/ml dilution, overnight at 4°C.