

ARG40991 anti-Peptide YY antibody

Package: 50 µg
Store at: -20°C

Summary

Product Description	Rabbit Polyclonal antibody recognizes Peptide YY
Tested Reactivity	Ms, Rat
Tested Application	IHC-P, WB
Host	Rabbit
Clonality	Polyclonal
Isotype	IgG
Target Name	Peptide YY
Species	Mouse
Immunogen	Synthetic peptide corresponding to aa. 29-64 of Mouse Peptide YY (YPAKPEAPGEDASPEELSRYYASLRHYLNLVTRQRY).
Conjugation	Un-conjugated
Alternate Names	Peptide tyrosine tyrosine; PYY; PYY-I; PYY1; Peptide YY; PYY-II; 3-36

Application Instructions

Application table	Application	Dilution
	IHC-P	1:200 - 1:1000
	WB	1:500 - 1:2000
Application Note	IHC-P: Antigen Retrieval: Heat mediation was performed in Citrate buffer (pH 6.0, epitope retrieval solution) for 20 min. * The dilutions indicate recommended starting dilutions and the optimal dilutions or concentrations should be determined by the scientist.	

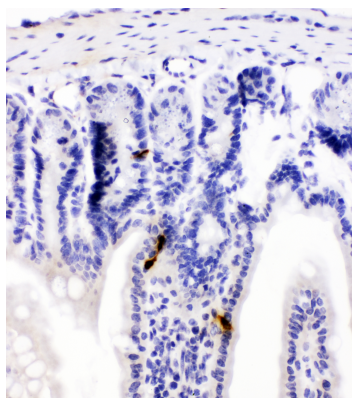
Properties

Form	Liquid
Purification	Affinity purification with immunogen.
Buffer	0.2% Na ₂ HPO ₄ , 0.9% NaCl, 0.05% Sodium azide and 5% BSA.
Preservative	0.05% Sodium azide
Stabilizer	5% BSA
Concentration	0.5 mg/ml
Storage instruction	For continuous use, store undiluted antibody at 2-8°C for up to a week. For long-term storage, aliquot and store at -20°C or below. Storage in frost free freezers is not recommended. Avoid repeated freeze/thaw cycles. Suggest spin the vial prior to opening. The antibody solution should be gently mixed before use.

Bioinformation

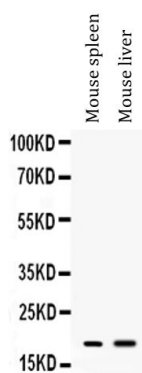
Gene Symbol	PYY
Gene Full Name	peptide YY
Background	The protein encoded by this gene is proteolytically processed to release a peptide that inhibits pancreatic secretion and mobility in the gut. Rare variations in this gene could increase susceptibility to obesity. [provided by RefSeq, Jul 2010]
Function	This gut peptide inhibits exocrine pancreatic secretion, has a vasoconstrictory action and inhibits jejunal and colonic mobility. [UniProt]
Highlight	Related news: Studying obesity and appetite control by quantifying orexigenic and anorexigenic hormones;
Calculated Mw	11 kDa
PTM	The peptide YY form is cleaved at Pro-30 by the prolyl endopeptidase FAP (seprase) activity (in vitro) to generate peptide YY(3-36). [UniProt]
Cellular Localization	Secreted. [UniProt]

Images



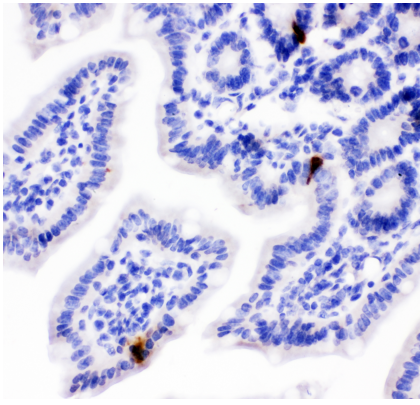
ARG40991 anti-Peptide YY antibody IHC-P image

Immunohistochemistry: Paraffin-embedded Mouse intestine tissue. Antigen Retrieval: Heat mediation was performed in Citrate buffer (pH 6.0, epitope retrieval solution) for 20 min. The tissue section was blocked with 10% goat serum. The tissue section was then stained with ARG40991 anti-Peptide YY antibody at 1 µg/ml dilution, overnight at 4°C.



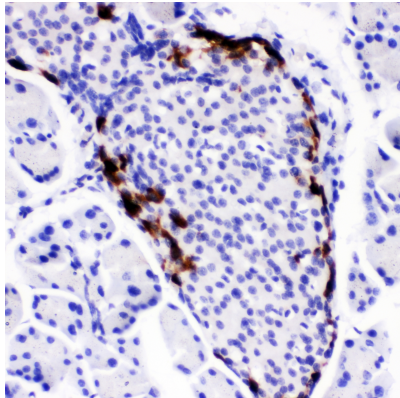
ARG40991 anti-Peptide YY antibody WB image

Western blot: 50 µg of samples under reducing conditions. Mouse spleen and Mouse liver lysates stained with ARG40991 anti-Peptide YY antibody at 0.5 µg/ml, overnight at 4°C.



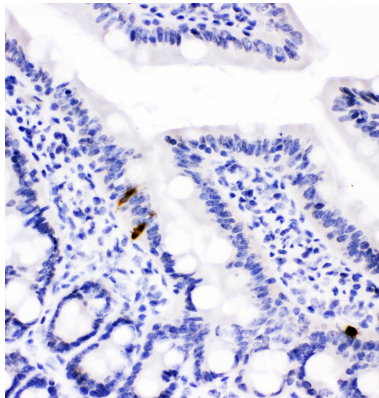
ARG40991 anti-Peptide YY antibody IHC-P image

Immunohistochemistry: Paraffin-embedded Mouse intestine tissue. Antigen Retrieval: Heat mediation was performed in Citrate buffer (pH 6.0, epitope retrieval solution) for 20 min. The tissue section was blocked with 10% goat serum. The tissue section was then stained with ARG40991 anti-Peptide YY antibody at 1 µg/ml dilution, overnight at 4°C.



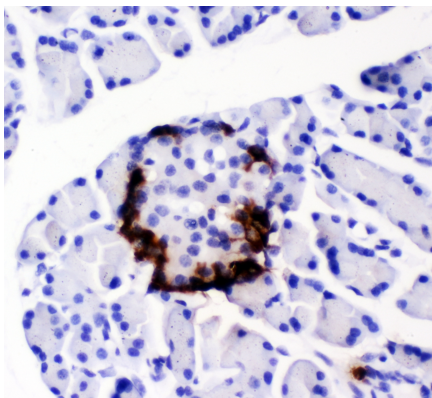
ARG40991 anti-Peptide YY antibody IHC-P image

Immunohistochemistry: Paraffin-embedded Mouse pancreas tissue. Antigen Retrieval: Heat mediation was performed in Citrate buffer (pH 6.0, epitope retrieval solution) for 20 min. The tissue section was blocked with 10% goat serum. The tissue section was then stained with ARG40991 anti-Peptide YY antibody at 1 µg/ml dilution, overnight at 4°C.



ARG40991 anti-Peptide YY antibody IHC-P image

Immunohistochemistry: Paraffin-embedded Rat intestine tissue. Antigen Retrieval: Heat mediation was performed in Citrate buffer (pH 6.0, epitope retrieval solution) for 20 min. The tissue section was blocked with 10% goat serum. The tissue section was then stained with ARG40991 anti-Peptide YY antibody at 1 µg/ml dilution, overnight at 4°C.



ARG40991 anti-Peptide YY antibody IHC-P image

Immunohistochemistry: Paraffin-embedded Rat pancreas tissue. Antigen Retrieval: Heat mediation was performed in Citrate buffer (pH 6.0, epitope retrieval solution) for 20 min. The tissue section was blocked with 10% goat serum. The tissue section was then stained with ARG40991 anti-Peptide YY antibody at 1 µg/ml dilution, overnight at 4°C.