

ARG41045
anti-P2RY14 antibodyPackage: 100 µl
Store at: -20°C

Summary

Product Description	Rabbit Polyclonal antibody recognizes P2RY14
Tested Reactivity	Hu, Ms, Rat
Tested Application	IHC-P, WB
Host	Rabbit
Clonality	Polyclonal
Isotype	IgG
Target Name	P2RY14
Species	Human
Immunogen	Recombinant fusion protein corresponding to aa. 209-338 of Human P2RY14 (NP_055694.3).
Conjugation	Un-conjugated
Alternate Names	G-protein coupled receptor 105; UDP-glucose receptor; BPR105; P2Y14; P2Y purinoceptor 14; GPR105

Application Instructions

Application table	Application	Dilution
	IHC-P	1:50 - 1:200
	WB	1:500 - 1:2000
Application Note	* The dilutions indicate recommended starting dilutions and the optimal dilutions or concentrations should be determined by the scientist.	
Positive Control	SH-SY5Y	
Observed Size	39 kDa	

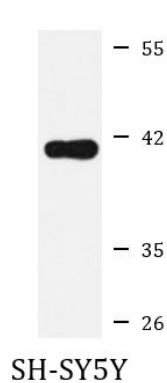
Properties

Form	Liquid
Purification	Affinity purified.
Buffer	PBS (pH 7.3), 0.02% Sodium azide and 50% Glycerol.
Preservative	0.02% Sodium azide
Stabilizer	50% Glycerol
Storage instruction	For continuous use, store undiluted antibody at 2-8°C for up to a week. For long-term storage, aliquot and store at -20°C. Storage in frost free freezers is not recommended. Avoid repeated freeze/thaw cycles. Suggest spin the vial prior to opening. The antibody solution should be gently mixed before use.
Note	For laboratory research only, not for drug, diagnostic or other use.

Bioinformation

Gene Symbol	P2RY14
Gene Full Name	purinergic receptor P2Y, G-protein coupled, 14
Background	The product of this gene belongs to the family of G-protein coupled receptors, which contains several receptor subtypes with different pharmacological selectivity for various adenosine and uridine nucleotides. This receptor is a P2Y purinergic receptor for UDP-glucose and other UDP-sugars coupled to G-proteins. It has been implicated in extending the known immune system functions of P2Y receptors by participating in the regulation of the stem cell compartment, and it may also play a role in neuroimmune function. Two transcript variants encoding the same protein have been identified for this gene. [provided by RefSeq, Jul 2008]
Function	Receptor for UDP-glucose and other UDP-sugar coupled to G-proteins. Not activated by ATP, ADP, UTP or ATP. [UniProt]
Calculated Mw	39 kDa
Cellular Localization	Cell membrane; Multi-pass membrane protein. [UniProt]

Images



ARG41045 anti-P2RY14 antibody WB image

Western blot: 25 µg of SH-SY5Y cell lysate stained with ARG41045 anti-P2RY14 antibody at 1:1000 dilution.