

ARG41102 anti-IL28RA antibody

Package: 50 µl
Store at: -20°C

Summary

Product Description	Rabbit Polyclonal antibody recognizes IL28RA
Tested Reactivity	Hu
Predict Reactivity	Ms, Rat, Cow, Dog, Gpig, Hrs, Rb
Tested Application	WB
Host	Rabbit
Clonality	Polyclonal
Isotype	IgG
Target Name	IL28RA
Species	Human
Immunogen	Synthetic peptide around the N-terminal region of Human IL28RA. (within the following region: EECAGTKELLCSMMCLKKQDLNKFGRVTVSPSSKSPWVESEYLDYLF)
Conjugation	Un-conjugated
Alternate Names	IFNLR; IFN-lambda-R1; IL-28RA; IL28RA; Interferon lambda receptor 1; LICR2; CRF2-12; IFN-lambda receptor 1; Cytokine receptor class-II member 12; Interleukin-28 receptor subunit alpha; Likely interleukin or cytokine receptor 2; IL-28R1; CRF2/12; Cytokine receptor family 2 member 12; IL-28R-alpha; IL-28 receptor subunit alpha

Application Instructions

Predict Reactivity Note	Predicted Homology Based On Immunogen Sequence: Cow: 92%; Dog: 100%; Guinea pig: 100%; Horse: 86%; Mouse: 77%; Rabbit: 86%; Rat: 92%				
Application table	<table> <tr> <th>Application</th><th>Dilution</th></tr> <tr> <td>WB</td><td>1 µg/ml</td></tr> </table>	Application	Dilution	WB	1 µg/ml
Application	Dilution				
WB	1 µg/ml				
Application Note	* The dilutions indicate recommended starting dilutions and the optimal dilutions or concentrations should be determined by the scientist.				

Properties

Form	Liquid
Purification	Affinity purified.
Buffer	PBS, 0.09% (w/v) Sodium azide and 2% Sucrose.
Preservative	0.09% (w/v) Sodium azide
Stabilizer	2% Sucrose
Concentration	Batch dependent: 0.5 - 1 mg/ml
Storage instruction	For continuous use, store undiluted antibody at 2-8°C for up to a week. For long-term storage, aliquot

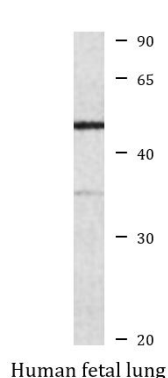
and store at -20°C or below. Storage in frost free freezers is not recommended. Avoid repeated freeze/thaw cycles. Suggest spin the vial prior to opening. The antibody solution should be gently mixed before use.

Note For laboratory research only, not for drug, diagnostic or other use.

Bioinformation

Gene Symbol	IFNLR1
Gene Full Name	interferon, lambda receptor 1
Background	The protein encoded by this gene belongs to the class II cytokine receptor family. This protein forms a receptor complex with interleukine 10 receptor, beta (IL10RB). The receptor complex has been shown to interact with three closely related cytokines, including interleukin 28A (IL28A), interleukin 28B (IL28B), and interleukin 29 (IL29). The expression of all three cytokines can be induced by viral infection. The cells overexpressing this protein have been found to have enhanced responses to IL28A and IL29, but decreased response to IL28B. Three alternatively spliced transcript variants encoding distinct isoforms have been reported. [provided by RefSeq, Jul 2008]
Function	The IFNLR1/IL10RB dimer is a receptor for the cytokine ligands IFNL2 and IFNL3 and mediates their antiviral activity. The ligand/receptor complex stimulate the activation of the JAK/STAT signaling pathway leading to the expression of IFN-stimulated genes (ISG), which contribute to the antiviral state. Determines the cell type specificity of the lambda interferon action. Shows a more restricted pattern of expression in the epithelial tissues thereby limiting responses to lambda interferons primarily to epithelial cells of the respiratory, gastrointestinal, and reproductive tracts. Seems not to be essential for early virus-activated host defense in vaginal infection, but plays an important role in Toll-like receptor (TLR)-induced antiviral defense. Plays a significant role in the antiviral immune defense in the intestinal epithelium. [UniProt]
Calculated Mw	58 kDa
Cellular Localization	Membrane; Single-pass type I membrane protein. [UniProt]

Images



ARG41102 anti-IL28RA antibody WB image

Western blot: Human fetal lung lysate stained with ARG41102 anti-IL28RA antibody at 1 µg/ml dilution.