

ARG41136
anti-RPL34 antibodyPackage: 100 µl
Store at: -20°C

Summary

Product Description	Rabbit Polyclonal antibody recognizes RPL34
Tested Reactivity	Hu
Predict Reactivity	Pig
Tested Application	IHC-P, WB
Host	Rabbit
Clonality	Polyclonal
Isotype	IgG
Target Name	RPL34
Species	Human
Immunogen	KLH-conjugated synthetic peptide between aa. 37-66 of Human RPL34.
Conjugation	Un-conjugated
Alternate Names	L34; 60S ribosomal protein L34

Application Instructions

Application table	Application	Dilution
	IHC-P	1:10 - 1:50
	WB	1:1000
Application Note	* The dilutions indicate recommended starting dilutions and the optimal dilutions or concentrations should be determined by the scientist.	

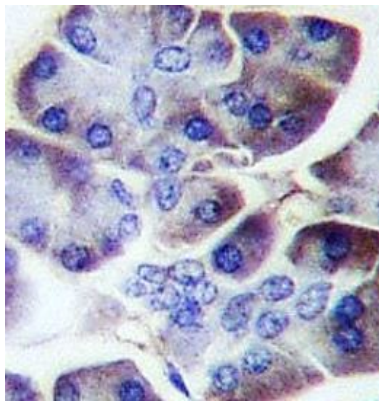
Properties

Form	Liquid
Purification	Purification with Protein A and immunogen peptide.
Buffer	PBS and 0.09% (W/V) Sodium azide.
Preservative	0.09% (W/V) Sodium azide
Storage instruction	For continuous use, store undiluted antibody at 2-8°C for up to a week. For long-term storage, aliquot and store at -20°C or below. Storage in frost free freezers is not recommended. Avoid repeated freeze/thaw cycles. Suggest spin the vial prior to opening. The antibody solution should be gently mixed before use.
Note	For laboratory research only, not for drug, diagnostic or other use.

Bioinformation

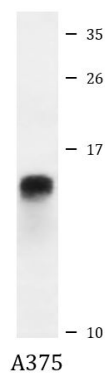
Gene Symbol	RPL34
Gene Full Name	ribosomal protein L34
Background	Ribosomes, the organelles that catalyze protein synthesis, consist of a small 40S subunit and a large 60S subunit. Together these subunits are composed of 4 RNA species and approximately 80 structurally distinct proteins. This gene encodes a ribosomal protein that is a component of the 60S subunit. The protein belongs to the L34E family of ribosomal proteins. It is located in the cytoplasm. This gene originally was thought to be located at 17q21, but it has been mapped to 4q. Transcript variants derived from alternative splicing, alternative transcription initiation sites, and/or alternative polyadenylation exist; these variants encode the same protein. As is typical for genes encoding ribosomal proteins, there are multiple processed pseudogenes of this gene dispersed through the genome. [provided by RefSeq, Jul 2008]
Calculated Mw	13 kDa
Cellular Localization	Cytoplasm, cytosol. Cytoplasm. Endoplasmic reticulum. Note=Detected on cytosolic polysomes (PubMed:25957688). Detected in ribosomes that are associated with the rough endoplasmic reticulum (By similarity). [UniProt]

Images



ARG41136 anti-RPL34 antibody IHC-P image

Immunohistochemistry: Formalin-fixed and paraffin-embedded Human pancreas tissue stained with ARG41136 anti-RPL34 antibody.



ARG41136 anti-RPL34 antibody WB image

Western blot: 35 µg of A375 cell lysate stained with ARG41136 anti-RPL34 antibody.