

**ARG41152**  
**anti-RPL37A antibody**Package: 100 µl  
Store at: -20°C

### Summary

Product Description	Rabbit Polyclonal antibody recognizes RPL37A
Tested Reactivity	Hu, Ms, Rat
Tested Application	WB
Host	Rabbit
Clonality	Polyclonal
Isotype	IgG
Target Name	RPL37A
Species	Human
Immunogen	KLH-conjugated synthetic peptide within the center region of Human RPL37A.
Conjugation	Un-conjugated
Alternate Names	L37A; 60S ribosomal protein L37a

### Application Instructions

Application table	Application	Dilution
	WB	1:500 - 1:1000
Application Note	* The dilutions indicate recommended starting dilutions and the optimal dilutions or concentrations should be determined by the scientist.	
Observed Size	16 kDa	

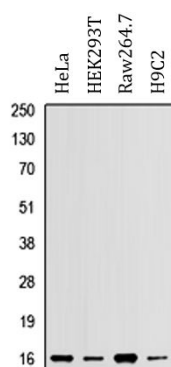
### Properties

Form	Liquid
Purification	Affinity purification with immunogen.
Buffer	0.42% Potassium phosphate (pH 7.3), 0.87% NaCl, 0.01% Sodium azide and 30% Glycerol.
Preservative	0.01% Sodium azide
Stabilizer	30% Glycerol
Storage instruction	For continuous use, store undiluted antibody at 2-8°C for up to a week. For long-term storage, aliquot and store at -20°C. Storage in frost free freezers is not recommended. Avoid repeated freeze/thaw cycles. Suggest spin the vial prior to opening. The antibody solution should be gently mixed before use.
Note	For laboratory research only, not for drug, diagnostic or other use.

### Bioinformation

Gene Symbol	RPL37A
Gene Full Name	ribosomal protein L37a
Background	Ribosomes, the organelles that catalyze protein synthesis, consist of a small 40S subunit and a large 60S subunit. Together these subunits are composed of 4 RNA species and approximately 80 structurally distinct proteins. This gene encodes a ribosomal protein that is a component of the 60S subunit. The protein belongs to the L37AE family of ribosomal proteins. It is located in the cytoplasm. The protein contains a C4-type zinc finger-like domain. As is typical for genes encoding ribosomal proteins, there are multiple processed pseudogenes of this gene dispersed through the genome. [provided by RefSeq, Jul 2008]
Calculated Mw	10 kDa

## Images



ARG41152 anti-RPL37A antibody WB image

Western blot: HeLa, HEK293T, Raw264.7 and H9C2 whole cell lysates stained with ARG41152 anti-RPL37A antibody.