

ARG41223 anti-GMFG antibody

Package: 100 µl
Store at: -20°C

Summary

Product Description	Rabbit Polyclonal antibody recognizes GMFG
Tested Reactivity	Hu
Tested Application	IHC-P, WB
Host	Rabbit
Clonality	Polyclonal
Isotype	IgG
Target Name	GMFG
Species	Human
Immunogen	KLH-conjugated synthetic peptide corresponding to aa. 1-30 of Human GMFG.
Conjugation	Un-conjugated
Alternate Names	Glia maturation factor gamma; GMF-gamma; GMF-GAMMA

Application Instructions

Application table	Application	Dilution
	IHC-P	1:10 - 1:50
	WB	1:1000
Application Note	* The dilutions indicate recommended starting dilutions and the optimal dilutions or concentrations should be determined by the scientist.	
Positive Control	Jurkat	
Observed Size	17 kDa	

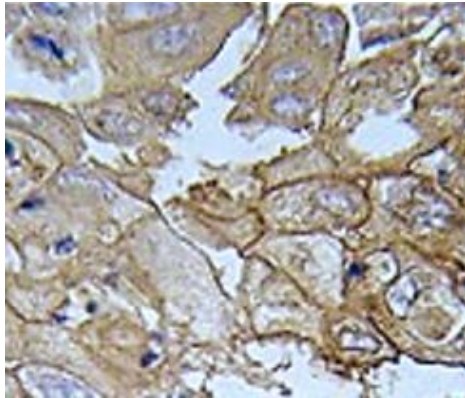
Properties

Form	Liquid
Purification	This antibody is prepared by Saturated Ammonium Sulfate (SAS) precipitation followed by dialysis against PBS.
Buffer	PBS and 0.09% (W/V) Sodium azide.
Preservative	0.09% (W/V) Sodium azide.
Storage instruction	For continuous use, store undiluted antibody at 2-8°C for up to a week. For long-term storage, aliquot and store at -20°C or below. Storage in frost free freezers is not recommended. Avoid repeated freeze/thaw cycles. Suggest spin the vial prior to opening. The antibody solution should be gently mixed before use.
Note	For laboratory research only, not for drug, diagnostic or other use.

Bioinformation

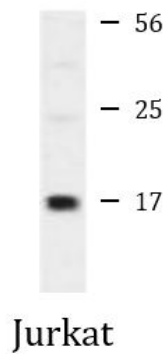
Gene Symbol	GMFG
Gene Full Name	glia maturation factor, gamma
Calculated Mw	17 kDa

Images



ARG41223 anti-GMFG antibody IHC-P image

Immunohistochemistry: Formalin-fixed and paraffin-embedded Human lung carcinoma tissue stained with ARG41223 anti-GMFG antibody.



ARG41223 anti-GMFG antibody WB image

Western blot: 35 ug of Jurkat cell lysate stained with ARG41223 anti-GMFG antibody.