

ARG41227 anti-SPARCL1 antibody

Package: 50 µg
Store at: -20°C

Summary

Product Description	Rabbit Polyclonal antibody recognizes SPARCL1
Tested Reactivity	Hu, Rat
Predict Reactivity	Ms, Hm
Tested Application	IHC-P
Host	Rabbit
Clonality	Polyclonal
Isotype	IgG
Target Name	SPARCL1
Species	Human
Immunogen	Synthetic peptide corresponding to aa. 649-664 of Human SPARCL1. (HCFGIKEEDIDENLLF)
Conjugation	Un-conjugated
Alternate Names	SPARC-like protein 1; High endothelial venule protein; MAST 9; PIG33; Hevin; MAST9; SC1

Application Instructions

Application table	Application	Dilution
	IHC-P	1:200 - 1:1000
Application Note	* The dilutions indicate recommended starting dilutions and the optimal dilutions or concentrations should be determined by the scientist.	
Observed Size	~ 75 kDa	

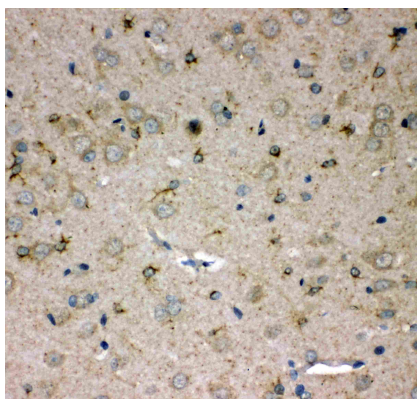
Properties

Form	Liquid
Purification	Affinity purification with immunogen.
Buffer	0.2% Na ₂ HPO ₄ , 0.9% NaCl, 0.05% Thimerosal, 0.05% Sodium azide and 5% BSA.
Preservative	0.05% Thimerosal and 0.05% Sodium azide
Stabilizer	5% BSA
Concentration	0.5 mg/ml
Storage instruction	For continuous use, store undiluted antibody at 2-8°C for up to a week. For long-term storage, aliquot and store at -20°C or below. Storage in frost free freezers is not recommended. Avoid repeated freeze/thaw cycles. Suggest spin the vial prior to opening. The antibody solution should be gently mixed before use.
Note	For laboratory research only, not for drug, diagnostic or other use.

Bioinformation

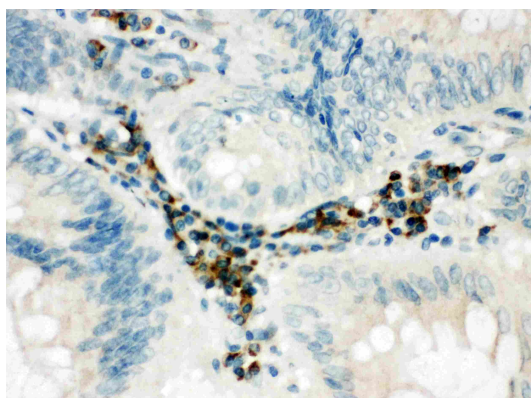
Gene Symbol	SPARCL1
Gene Full Name	SPARC-like 1 (hevin)
Calculated Mw	75 kDa
PTM	N- and O-glycosylated. O-glycosylated with a core 1 or possibly core 8 glycan. [UniProt]
Cellular Localization	Secreted, extracellular space, extracellular matrix. [UniProt]

Images



ARG41227 anti-SPARCL1 antibody IHC-P image

Immunohistochemistry: Paraffin-embedded Rat brain tissue stained with ARG41227 anti-SPARCL1 antibody.



ARG41227 anti-SPARCL1 antibody IHC-P image

Immunohistochemistry: Paraffin-embedded Human intestinal cancer tissue stained with ARG41227 anti-SPARCL1 antibody.