

ARG41235 anti-RIPK3 / RIP3 phospho (Ser232) antibody

Package: 100 µl
Store at: -20°C

Summary

Product Description	Rabbit Polyclonal antibody recognizes RIPK3 / RIP3 phospho (Ser232)
Tested Reactivity	Ms
Predict Reactivity	Rat
Tested Application	WB
Host	Rabbit
Clonality	Polyclonal
Isotype	IgG
Target Name	RIPK3 / RIP3
Species	Mouse
Immunogen	Phosphospecific peptide around Ser232 of Mouse RIPK3 / RIP3.
Conjugation	Un-conjugated
Alternate Names	Receptor-interacting serine/threonine-protein kinase 3; Receptor-interacting protein 3; RIP-3; RIP3; RIP-like protein kinase 3; EC 2.7.11.1

Application Instructions

Application table	Application	Dilution
	WB	1:500 - 1:2000
Application Note	* The dilutions indicate recommended starting dilutions and the optimal dilutions or concentrations should be determined by the scientist.	
Observed Size	~ 57 kDa	

Properties

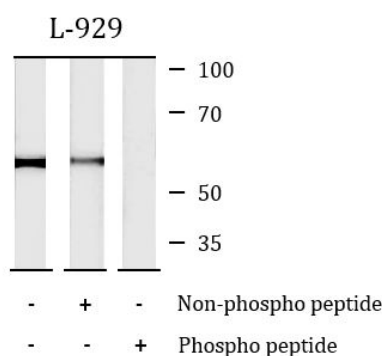
Form	Liquid
Purification	Affinity purification with phospho-specific peptide and the non-phospho specific antibodies were removed by chromatography using non-phosphopeptide.
Buffer	PBS (pH 7.4), 150 mM NaCl, 0.02% Sodium azide and 50% Glycerol.
Preservative	0.02% Sodium azide
Stabilizer	50% Glycerol
Concentration	1 mg/ml
Storage instruction	For continuous use, store undiluted antibody at 2-8°C for up to a week. For long-term storage, aliquot and store at -20°C. Storage in frost free freezers is not recommended. Avoid repeated freeze/thaw cycles. Suggest spin the vial prior to opening. The antibody solution should be gently mixed before use.

Note For laboratory research only, not for drug, diagnostic or other use.

Bioinformation

Gene Symbol	RIPK3
Gene Full Name	receptor-interacting serine-threonine kinase 3
Background	The product of this gene is a member of the receptor-interacting protein (RIP) family of serine/threonine protein kinases, and contains a C-terminal domain unique from other RIP family members. The encoded protein is predominantly localized to the cytoplasm, and can undergo nucleocytoplasmic shuttling dependent on novel nuclear localization and export signals. It is a component of the tumor necrosis factor (TNF) receptor-I signaling complex, and can induce apoptosis and weakly activate the NF-kappaB transcription factor. [provided by RefSeq, Jul 2008]
Function	Essential for necroptosis, a programmed cell death process in response to death-inducing TNF-alpha family members. Upon induction of necrosis, RIPK3 interacts with, and phosphorylates RIPK1 and MLKL to form a necrosis-inducing complex. RIPK3 binds to and enhances the activity of three metabolic enzymes: GLUL, GLUD1, and PYGL. These metabolic enzymes may eventually stimulate the tricarboxylic acid cycle and oxidative phosphorylation, which could result in enhanced ROS production. [UniProt]
Highlight	Related products: RIPK3 antibodies ; RIPK3 Duos / Panels ; Anti-Rabbit IgG secondary antibodies ; Related news: RIP1 activation and pathogenesis of NASH Ripoptosome & Necrosome antibody panels are launched
Calculated Mw	57 kDa
PTM	RIPK1 and RIPK3 undergo reciprocal auto- and trans-phosphorylation. Phosphorylation of Ser-199 plays a role in the necroptotic function of RIPK3. Phosphorylation at Ser-227 is required for binding MLKL. Polyubiquitinated with 'Lys-48' and 'Lys-63'-linked chains by BIRC2/c-IAP1 and BIRC3/c-IAP2, leading to activation of NF-kappa-B. [UniProt]
Cellular Localization	Cytoplasm, cytosol. Cell membrane. Mitochondrion. [UniProt]

Images



ARG41235 anti-RIPK3 / RIP3 phospho (Ser232) antibody WB image

Western blot: L-929 cell lysate stained with ARG41235 anti-RIPK3 / RIP3 phospho (Ser232) antibody. Peptide treatments: 1) No treatment; 2) Non-phospho peptide and 3) Phospho peptide treatments.