

ARG41236 anti-LY86 / MD1 antibody

Package: 50 µg
Store at: -20°C

Summary

Product Description	Rabbit Polyclonal antibody recognizes LY86 / MD1
Tested Reactivity	Hu
Tested Application	IHC-P, WB
Host	Rabbit
Clonality	Polyclonal
Isotype	IgG
Target Name	LY86 / MD1
Species	Human
Immunogen	A 14 amino acid synthetic peptide within the last 50 amino acids of Human LY86 / MD1.
Conjugation	Un-conjugated
Alternate Names	dJ80N2.1; Ly-86; Lymphocyte antigen 86; Protein MD-1; MD-1; MD1; MMD-1

Application Instructions

Application table	Application	Dilution
	IHC-P	2 µg/ml
	WB	0.5 - 2 µg/ml
Application Note	* The dilutions indicate recommended starting dilutions and the optimal dilutions or concentrations should be determined by the scientist.	
Positive Control	Daudi	

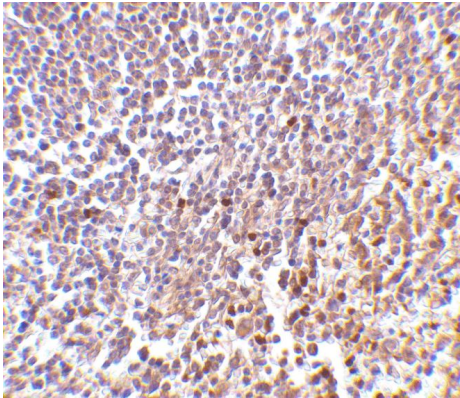
Properties

Form	Liquid
Purification	Affinity purification with immunogen.
Buffer	PBS and 0.02% Sodium azide.
Preservative	0.02% Sodium azide
Concentration	1 mg/ml
Storage instruction	For continuous use, store undiluted antibody at 2-8°C for up to a week. For long-term storage, aliquot and store at -20°C or below. Storage in frost free freezers is not recommended. Avoid repeated freeze/thaw cycles. Suggest spin the vial prior to opening. The antibody solution should be gently mixed before use.
Note	For laboratory research only, not for drug, diagnostic or other use.

Bioinformation

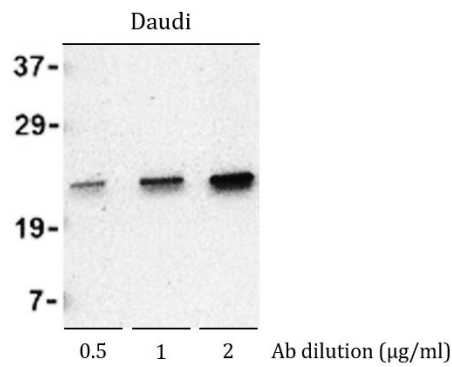
Gene Symbol	LY86
Gene Full Name	lymphocyte antigen 86
Function	May cooperate with CD180 and TLR4 to mediate the innate immune response to bacterial lipopolysaccharide (LPS) and cytokine production. Important for efficient CD180 cell surface expression (By similarity). [UniProt]
Calculated Mw	18 kDa
Cellular Localization	Secreted, extracellular space. Note=Associated with CD180 at the cell surface. [UniProt]

Images



ARG41236 anti-LY86 / MD1 antibody IHC-P image

Immunohistochemistry: Paraffin-embedded Human spleen tissue stained with ARG41236 anti-LY86 / MD1 antibody at 2 µg/ml dilution.



ARG41236 anti-LY86 / MD1 antibody WB image

Western blot: Daudi cell lysate stained with ARG41236 anti-LY86 / MD1 antibody at 0.5, 1 and 2 µg/ml dilution.