

## ARG41271 anti-ACTR1A / ARP1 antibody

Package: 50 µl  
Store at: -20°C

### Summary

Product Description	Rabbit Polyclonal antibody recognizes ACTR1A / ARP1
Tested Reactivity	Hu
Predict Reactivity	Ms, Rat, Cow, Dog, Gpig, Hrs, Rb, Zfsh
Tested Application	WB
Host	Rabbit
Clonality	Polyclonal
Isotype	IgG
Target Name	ACTR1A / ARP1
Species	Human
Immunogen	Synthetic peptide around the middle region of Human ACTR1A / ARP1. (within the following region: AIKERACYLSINPQKDETEKAQYYLPDGSITIEIGPSRFRAPELLFRP)
Conjugation	Un-conjugated
Alternate Names	Alpha-centractin; Actin-RPV; Arp1A; Centractin; Centrosome-associated actin homolog; CTRN1; ARP1

### Application Instructions

Predict Reactivity Note	Predicted Homology Based On Immunogen Sequence: Cow: 100%; Dog: 100%; Guinea pig: 100%; Horse: 100%; Mouse: 100%; Rabbit: 100%; Rat: 100%; Zebrafish: 100%				
Application table	<table> <tr> <th>Application</th><th>Dilution</th></tr> <tr> <td>WB</td><td>0.2 - 1 µg/ml</td></tr> </table>	Application	Dilution	WB	0.2 - 1 µg/ml
Application	Dilution				
WB	0.2 - 1 µg/ml				
Application Note	* The dilutions indicate recommended starting dilutions and the optimal dilutions or concentrations should be determined by the scientist.				
Positive Control	MCF7				
Observed Size	43 kDa				

### Properties

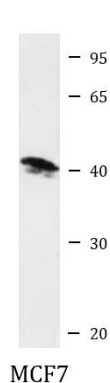
Form	Liquid
Purification	Affinity purified.
Buffer	PBS, 0.09% (w/v) Sodium azide and 2% Sucrose.
Preservative	0.09% (w/v) Sodium azide
Stabilizer	2% Sucrose
Concentration	Batch dependent: 0.5 - 1 mg/ml

Storage instruction	For continuous use, store undiluted antibody at 2-8°C for up to a week. For long-term storage, aliquot and store at -20°C or below. Storage in frost free freezers is not recommended. Avoid repeated freeze/thaw cycles. Suggest spin the vial prior to opening. The antibody solution should be gently mixed before use.
Note	For laboratory research only, not for drug, diagnostic or other use.

## Bioinformation

Gene Symbol	ACTR1A
Gene Full Name	ARP1 actin-related protein 1 homolog A, centractin alpha (yeast)
Background	This gene encodes a 42.6 kD subunit of dynactin, a macromolecular complex consisting of 10-11 subunits ranging in size from 22 to 150 kD. Dynactin binds to both microtubules and cytoplasmic dynein. It is involved in a diverse array of cellular functions, including ER-to-Golgi transport, the centripetal movement of lysosomes and endosomes, spindle formation, chromosome movement, nuclear positioning, and axonogenesis. This subunit is present in 8-13 copies per dynactin molecule, and is the most abundant molecule in the dynactin complex. It is an actin-related protein, and is approximately 60% identical at the amino acid level to conventional actin. [provided by RefSeq, Jul 2008]
Function	Component of a multi-subunit complex involved in microtubule based vesicle motility. It is associated with the centrosome. [UniProt]
Calculated Mw	43 kDa
Cellular Localization	Cytoplasm, cytoskeleton. Cytoplasm, cytoskeleton, microtubule organizing center, centrosome. Cytoplasm, cell cortex. [UniProt]

## Images



ARG41271 anti-ACTR1A / ARP1 antibody WB image

Western blot: MCF7 cell lysate stained with ARG41271 anti-ACTR1A / ARP1 antibody at 0.2 - 1 µg/ml dilution.