

ARG41280 anti-BLZF1 antibody

Package: 100 µl
Store at: -20°C

Summary

Product Description	Rabbit Polyclonal antibody recognizes BLZF1
Tested Reactivity	Hu, Ms
Tested Application	ICC/IF, WB
Host	Rabbit
Clonality	Polyclonal
Isotype	IgG
Target Name	BLZF1
Species	Human
Immunogen	Recombinant fusion protein corresponding to aa. 1-400 of Human BLZF1 (NP_003657.1).
Conjugation	Un-conjugated
Alternate Names	JEM1; Golgin-45; JEM-1; p45 basic leucine-zipper nuclear factor; Basic leucine zipper nuclear factor 1; JEM-1s; GOLGIN-45

Application Instructions

Application table	Application	Dilution
	ICC/IF	1:50 - 1:200
	WB	1:500 - 1:2000
Application Note	* The dilutions indicate recommended starting dilutions and the optimal dilutions or concentrations should be determined by the scientist.	
Positive Control	Mouse skeletal muscle	
Observed Size	50 kDa	

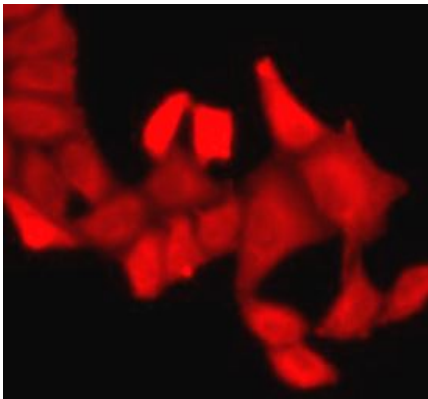
Properties

Form	Liquid
Purification	Affinity purified.
Buffer	PBS (pH 7.3), 0.02% Sodium azide and 50% Glycerol.
Preservative	0.02% Sodium azide
Stabilizer	50% Glycerol
Storage instruction	For continuous use, store undiluted antibody at 2-8°C for up to a week. For long-term storage, aliquot and store at -20°C. Storage in frost free freezers is not recommended. Avoid repeated freeze/thaw cycles. Suggest spin the vial prior to opening. The antibody solution should be gently mixed before use.
Note	For laboratory research only, not for drug, diagnostic or other use.

Bioinformation

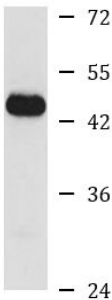
Gene Symbol	BLZF1
Gene Full Name	basic leucine zipper nuclear factor 1
Function	Required for normal Golgi structure and for protein transport from the endoplasmic reticulum (ER) through the Golgi apparatus to the cell surface. [UniProt]
Calculated Mw	45 kDa
PTM	ADP-ribosylated by tankyrase TNKS and TNKS2. Poly-ADP-ribosylated protein is recognized by RNF146, followed by ubiquitination. Ubiquitinated by RNF146 when poly-ADP-ribosylated, leading to its degradation. [UniProt]
Cellular Localization	Golgi apparatus lumen. Isoform 1: Nucleus. Isoform 2: Cytoplasm. [UniProt]

Images



ARG41280 anti-BLZF1 antibody ICC/IF image

Immunofluorescence: U2OS cells stained with ARG41280 anti-BLZF1 antibody.



Mouse skeletal muscle

ARG41280 anti-BLZF1 antibody WB image

Western blot: 25 ug of Mouse skeletal muscle lysate stained with ARG41280 anti-BLZF1 antibody at 1:1000 dilution.