

ARG41289 anti-RGS16 antibody

Package: 100 µl
Store at: -20°C

Summary

Product Description	Rabbit Polyclonal antibody recognizes RGS16
Tested Reactivity	Hu, Ms, Rat
Tested Application	IHC-P, WB
Host	Rabbit
Clonality	Polyclonal
Isotype	IgG
Target Name	RGS16
Species	Human
Immunogen	Recombinant fusion protein corresponding to aa. 1-202 of Human RGS16 (NP_002919.3).
Conjugation	Un-conjugated
Alternate Names	RGS16; RGS-r; Retinally abundant regulator of G-protein signaling; Retinal-specific RGS; A28-RGS14P; RGS-R; A28-RGS14; Regulator of G-protein signaling 16; hRGS-r

Application Instructions

Application table	Application	Dilution
	IHC-P	1:50 - 1:200
	WB	1:200 - 1:2000
Application Note	* The dilutions indicate recommended starting dilutions and the optimal dilutions or concentrations should be determined by the scientist.	
Positive Control	Mouse lung	
Observed Size	28 kDa	

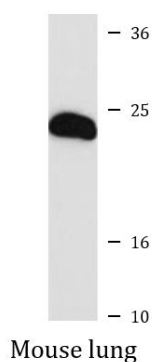
Properties

Form	Liquid
Purification	Affinity purified.
Buffer	PBS (pH 7.3), 0.02% Sodium azide and 50% Glycerol.
Preservative	0.02% Sodium azide
Stabilizer	50% Glycerol
Storage instruction	For continuous use, store undiluted antibody at 2-8°C for up to a week. For long-term storage, aliquot and store at -20°C. Storage in frost free freezers is not recommended. Avoid repeated freeze/thaw cycles. Suggest spin the vial prior to opening. The antibody solution should be gently mixed before use.
Note	For laboratory research only, not for drug, diagnostic or other use.

Bioinformation

Gene Symbol	RGS16
Gene Full Name	regulator of G-protein signaling 16
Background	The protein encoded by this gene belongs to the 'regulator of G protein signaling' family. It inhibits signal transduction by increasing the GTPase activity of G protein alpha subunits. It also may play a role in regulating the kinetics of signaling in the phototransduction cascade. [provided by RefSeq, Jul 2008]
Function	Inhibits signal transduction by increasing the GTPase activity of G protein alpha subunits thereby driving them into their inactive GDP-bound form. Binds to G(i)-alpha and G(o)-alpha, but not to G(s)-alpha. May play a role in regulating the kinetics of signaling in the phototransduction cascade. [UniProt]
Calculated Mw	23 kDa
PTM	Palmitoylated on Cys-2 and/or Cys-12. Phosphorylated. Phosphorylation at Tyr-168 by EGFR enhances GTPase accelerating (GAP) activity toward GNAI1. [UniProt]
Cellular Localization	Membrane; Lipid-anchor. [UniProt]

Images



ARG41289 anti-RGS16 antibody WB image

Western blot: 25 ug of Mouse lung lysate stained with ARG41289 anti-RGS16 antibody at 1:1000 dilution.