

ARG41302 anti-RBBP6 antibody

Package: 50 µg
Store at: -20°C

Summary

Product Description	Rabbit Polyclonal antibody recognizes RBBP6
Tested Reactivity	Hu, Ms
Tested Application	ICC/IF, IHC-P, WB
Host	Rabbit
Clonality	Polyclonal
Isotype	IgG
Target Name	RBBP6
Species	Human
Immunogen	Recombinant protein corresponding to aa. 97-351 of Human RBBP6.
Conjugation	Un-conjugated
Alternate Names	PACT; Retinoblastoma-binding protein 6; E3 ubiquitin-protein ligase RBBP6; EC 6.3.2.-; SNAMA; Proliferation potential-related protein; RBQ-1; Protein P2P-R; Retinoblastoma-binding Q protein 1; MY038; P2P-R; p53-associated cellular protein of testis

Application Instructions

Application table	Application	Dilution
	ICC/IF	1:100
	IHC-P	1:100
	WB	2 - 5 µg/ml
Application Note	* The dilutions indicate recommended starting dilutions and the optimal dilutions or concentrations should be determined by the scientist.	
Positive Control	Mouse brain	

Properties

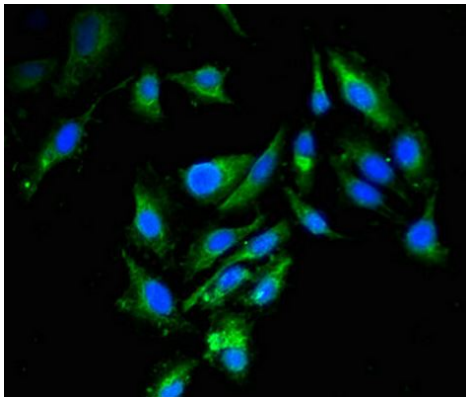
Form	Liquid
Purification	Purification with Protein G.
Buffer	0.01M PBS (pH 7.4), 0.03% Proclin 300 and 50% Glycerol.
Preservative	0.03% Proclin 300
Stabilizer	50% Glycerol
Storage instruction	For continuous use, store undiluted antibody at 2-8°C for up to a week. For long-term storage, aliquot and store at -20°C. Storage in frost free freezers is not recommended. Avoid repeated freeze/thaw cycles. Suggest spin the vial prior to opening. The antibody solution should be gently mixed before use.

Note For laboratory research only, not for drug, diagnostic or other use.

Bioinformation

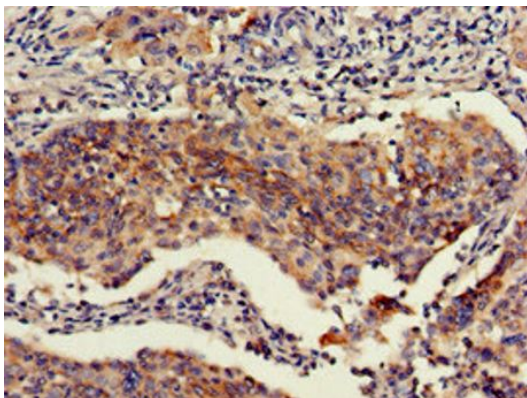
Gene Symbol	RBBP6
Gene Full Name	retinoblastoma binding protein 6
Background	The retinoblastoma tumor suppressor (pRB) protein binds with many other proteins. In various human cancers, pRB suppresses cellular proliferation and is inactivated. Cell cycle-dependent phosphorylation regulates the activity of pRB. This gene encodes a protein which binds to underphosphorylated but not phosphorylated pRB. Multiple alternatively spliced transcript variants that encode different isoforms have been found for this gene. [provided by RefSeq, Jul 2008]
Function	E3 ubiquitin-protein ligase which promotes ubiquitination of YBX1, leading to its degradation by the proteasome. May play a role as a scaffold protein to promote the assembly of the p53/TP53-MDM2 complex, resulting in increase of MDM2-mediated ubiquitination and degradation of p53/TP53; may function as negative regulator of p53/TP53, leading to both apoptosis and cell growth. [UniProt]
Calculated Mw	202 kDa
PTM	Phosphorylated by NEK6. [UniProt]
Cellular Localization	Nucleus, nucleolus. Chromosome. Cytoplasm, cytoskeleton, microtubule organizing center, centrosome. Note=Colocalizes with mitotic chromosomes. Colocalizes with NEK6 in the centrosome. [UniProt]

Images



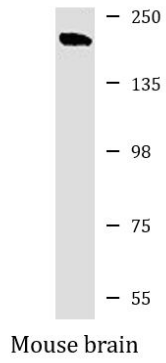
ARG41302 anti-RBBP6 antibody ICC/IF image

Immunofluorescence: HeLa cells stained with ARG41302 anti-RBBP6 antibody at 1:100 dilution.



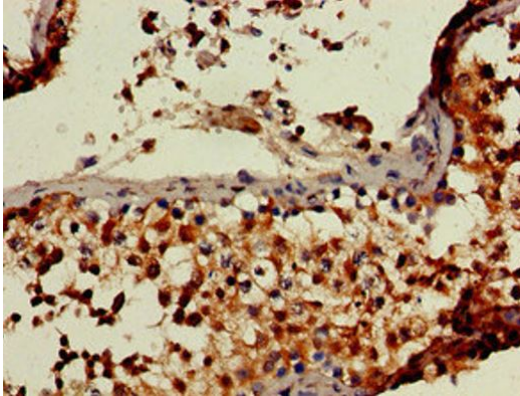
ARG41302 anti-RBBP6 antibody IHC-P image

Immunohistochemistry: Paraffin-embedded Human cervical cancer tissue stained with ARG41302 anti-RBBP6 antibody at 1:100 dilution.



ARG41302 anti-RBBP6 antibody WB image

Western blot: Mouse brain lysate stained with ARG41302 anti-RBBP6 antibody at 3 $\mu\text{g}/\text{ml}$ dilution.



ARG41302 anti-RBBP6 antibody IHC-P image

Immunohistochemistry: Paraffin-embedded Human testis tissue stained with ARG41302 anti-RBBP6 antibody at 1:100 dilution.