

## ARG41310 anti-TDGF1 / Cripto 1 antibody

Package: 50 µg  
Store at: -20°C

### Summary

Product Description	Rabbit Polyclonal antibody recognizes TDGF1 / Cripto 1
Tested Reactivity	Hu
Predict Reactivity	Ms, Rat
Tested Application	ICC/IF, WB
Host	Rabbit
Clonality	Polyclonal
Isotype	IgG
Target Name	TDGF1 / Cripto 1
Species	Human
Immunogen	A 17 amino acid peptide within aa. 40 - 90 of Human TDGF1.
Conjugation	Un-conjugated
Alternate Names	CRGF; Teratocarcinoma-derived growth factor 1; Cripto-1 growth factor; CR; CRIPTO; Epidermal growth factor-like cripto protein CR1

### Application Instructions

Application table	Application	Dilution
	ICC/IF	20 µg/ml
	WB	1 - 2 µg/ml
Application Note	* The dilutions indicate recommended starting dilutions and the optimal dilutions or concentrations should be determined by the scientist.	
Positive Control	293 cells	
Observed Size	15-21 kDa	

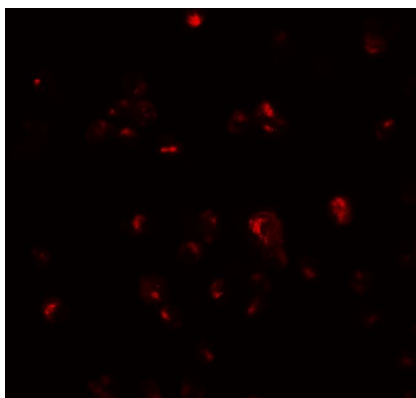
### Properties

Form	Liquid
Purification	Affinity purification with immunogen.
Buffer	PBS and 0.02% Sodium azide
Preservative	0.02% Sodium azide
Concentration	1 mg/ml
Storage instruction	For continuous use, store undiluted antibody at 2-8°C for up to a week. For long-term storage, aliquot and store at -20°C or below. Storage in frost free freezers is not recommended. Avoid repeated freeze/thaw cycles. Suggest spin the vial prior to opening. The antibody solution should be gently mixed before use.

## Bioinformation

Gene Symbol	TDGF1
Gene Full Name	teratocarcinoma-derived growth factor 1
Background	This gene encodes an epidermal growth factor-related protein that contains a cripto, FRL-1, and cryptic domain. The encoded protein is an extracellular, membrane-bound signaling protein that plays an essential role in embryonic development and tumor growth. Mutations in this gene are associated with forebrain defects. Pseudogenes of this gene are found on chromosomes 2, 3, 6, 8, 19 and X. Alternate splicing results in multiple transcript variants. [provided by RefSeq, Mar 2010]
Function	Could play a role in the determination of the epiblastic cells that subsequently give rise to the mesoderm. [UniProt]
Calculated Mw	21 kDa
Cellular Localization	Cell membrane; Lipid-anchor, GPI-anchor. Secreted. Note=Released from the cell membrane by GPI cleavage. [UniProt]

## Images



ARG41310 anti-TDGF1 / Cripto 1 antibody ICC/IF image

Immunofluorescence: 293 cells stained with ARG41310 anti-TDGF1 / Cripto 1 antibody at 20 µg/ml dilution.



ARG41310 anti-TDGF1 / Cripto 1 antibody WB image

Western blot: 293 cell lysate stained with ARG41310 anti-TDGF1 / Cripto 1 antibody at 1 µg/ml dilution.