

ARG41318 anti-Deptor antibody

Package: 100 µl
Store at: -20°C

Summary

Product Description	Rabbit Polyclonal antibody recognizes Deptor
Tested Reactivity	Hu
Tested Application	WB
Host	Rabbit
Clonality	Polyclonal
Isotype	IgG
Target Name	Deptor
Species	Human
Immunogen	KLH-conjugated synthetic peptide between aa. 86-120 of Human Deptor.
Conjugation	Un-conjugated
Alternate Names	DEP domain-containing mTOR-interacting protein; DEP domain-containing protein 6; DEPDC6; DEP.6

Application Instructions

Application table	Application	Dilution
	WB	1:500 - 1:2000
Application Note	* The dilutions indicate recommended starting dilutions and the optimal dilutions or concentrations should be determined by the scientist.	
Observed Size	~46 kDa	

Properties

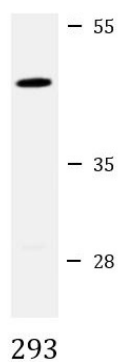
Form	Liquid
Purification	Purification with Protein A and immunogen peptide.
Buffer	PBS and 0.09% (W/V) Sodium azide.
Preservative	0.09% (W/V) Sodium azide
Storage instruction	For continuous use, store undiluted antibody at 2-8°C for up to a week. For long-term storage, aliquot and store at -20°C or below. Storage in frost free freezers is not recommended. Avoid repeated freeze/thaw cycles. Suggest spin the vial prior to opening. The antibody solution should be gently mixed before use.
Note	For laboratory research only, not for drug, diagnostic or other use.

Bioinformation

Gene Symbol	DEPTOR
-------------	--------

Gene Full Name	DEP domain containing MTOR-interacting protein
Function	Negative regulator of the mTORC1 and mTORC2 signaling pathways. Inhibits the kinase activity of both complexes. [UniProt]
Calculated Mw	46 kDa
PTM	Phosphorylated. Phosphorylation weakens interaction with MTOR within mTORC1 and mTORC2. [UniProt]

Images



ARG41318 anti-Deptor antibody WB image

Western blot: 20 µg of 293 whole cell lysate stained with ARG41318 anti-Deptor antibody at 1:2000 dilution.