

ARG41364 anti-CDC7 antibody

Package: 100 µl
Store at: -20°C

Summary

Product Description	Rabbit Polyclonal antibody recognizes CDC7
Tested Reactivity	Hu, Ms, Rat
Tested Application	FACS, WB
Host	Rabbit
Clonality	Polyclonal
Isotype	IgG
Target Name	CDC7
Species	Human
Immunogen	Synthetic peptide derived from Human CDC7.
Conjugation	Un-conjugated
Alternate Names	CDC7L1; huCDC7; CDC7-related kinase; huCdc7; Hsk1; Cell division cycle 7-related protein kinase; HsCdc7; EC 2.7.11.1; HsCDC7

Application Instructions

Application table	Application	Dilution
	FACS	1:100
	WB	1:1000 - 1:2000
Application Note	* The dilutions indicate recommended starting dilutions and the optimal dilutions or concentrations should be determined by the scientist.	
Observed Size	~ 65 kDa	

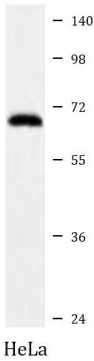
Properties

Form	Liquid
Purification	Affinity purified.
Buffer	PBS (pH 7.4), 150 mM NaCl, 0.02% Sodium azide and 50% Glycerol.
Preservative	0.02% Sodium azide
Stabilizer	50% Glycerol
Storage instruction	For continuous use, store undiluted antibody at 2-8°C for up to a week. For long-term storage, aliquot and store at -20°C. Storage in frost free freezers is not recommended. Avoid repeated freeze/thaw cycles. Suggest spin the vial prior to opening. The antibody solution should be gently mixed before use.
Note	For laboratory research only, not for drug, diagnostic or other use.

Bioinformation

Gene Symbol	CDC7
Gene Full Name	cell division cycle 7
Background	This gene encodes a cell division cycle protein with kinase activity that is critical for the G1/S transition. The yeast homolog is also essential for initiation of DNA replication as cell division occurs. Overexpression of this gene product may be associated with neoplastic transformation for some tumors. Multiple alternatively spliced transcript variants that encode the same protein have been detected. [provided by RefSeq, Aug 2008]
Function	Seems to phosphorylate critical substrates that regulate the G1/S phase transition and/or DNA replication. Can phosphorylates MCM2 and MCM3. [UniProt]
Calculated Mw	64 kDa
Cellular Localization	Nucleus. [UniProt]

Images



ARG41364 anti-CDC7 antibody WB image

Western blot: HeLa cell lysate stained with ARG41364 anti-CDC7 antibody.