

ARG41447 anti-FTCD / 58K Golgi protein antibody

Package: 100 µl
Store at: -20°C

Summary

Product Description	Rabbit Polyclonal antibody recognizes FTCD / 58K Golgi protein
Tested Reactivity	Hu
Tested Application	FACS, IHC-P, WB
Host	Rabbit
Clonality	Polyclonal
Isotype	IgG
Target Name	FTCD / 58K Golgi protein
Species	Human
Immunogen	Synthetic peptide of Human FTCD / 58K Golgi protein.
Conjugation	Un-conjugated
Alternate Names	EC 2.1.2.5; LCHC1; Formiminotetrahydrofolate cyclodeaminase; Formimidoyltransferase-cyclodeaminase; Formiminotransferase-cyclodeaminase; Glutamate formiminotransferase; Glutamate formyltransferase; FTCD; EC 4.3.1.4

Application Instructions

Application table	Application	Dilution
	FACS	1:100
	IHC-P	1:50 - 1:200
	WB	1:500 - 1:2000
Application Note	* The dilutions indicate recommended starting dilutions and the optimal dilutions or concentrations should be determined by the scientist.	
Positive Control	Human fetal liver	
Observed Size	~ 58 kDa	

Properties

Form	Liquid
Purification	Affinity purified.
Buffer	PBS (pH 7.4), 150 mM NaCl, 0.02% Sodium azide and 50% Glycerol.
Preservative	0.02% Sodium azide
Stabilizer	50% Glycerol
Storage instruction	For continuous use, store undiluted antibody at 2-8°C for up to a week. For long-term storage, aliquot and store at -20°C. Storage in frost free freezers is not recommended. Avoid repeated freeze/thaw cycles. Suggest spin the vial prior to opening. The antibody solution should be gently mixed before use.

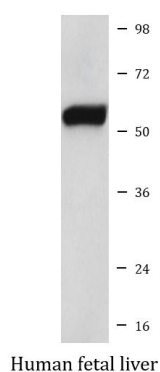
Note

For laboratory research only, not for drug, diagnostic or other use.

Bioinformation

Gene Symbol	FTCD
Gene Full Name	formimidoyltransferase cyclodeaminase
Background	The protein encoded by this gene is a bifunctional enzyme that channels 1-carbon units from formiminoglutamate, a metabolite of the histidine degradation pathway, to the folate pool. Mutations in this gene are associated with glutamate formiminotransferase deficiency. Alternatively spliced transcript variants have been found for this gene.[provided by RefSeq, Dec 2009]
Function	<p>Folate-dependent enzyme, that displays both transferase and deaminase activity. Serves to channel one-carbon units from formiminoglutamate to the folate pool.</p> <p>Binds and promotes bundling of vimentin filaments originating from the Golgi. [UniProt]</p>
Calculated Mw	59 kDa
Cellular Localization	Cytoplasm, cytoskeleton, microtubule organizing center, centrosome, centriole. Golgi apparatus. Note=More abundantly located around the mother centriole. [UniProt]

Images



ARG41447 anti-FTCD / 58K Golgi protein antibody WB image

Western blot: Human fetal liver lysate stained with ARG41447 anti-FTCD / 58K Golgi protein antibody.