

## ARG41460 anti-CD42b antibody

Package: 100 µl  
Store at: -20°C

### Summary

Product Description	Rabbit Polyclonal antibody recognizes CD42b
Tested Reactivity	Hu
Tested Application	IHC-P, WB
Host	Rabbit
Clonality	Polyclonal
Isotype	IgG
Target Name	CD42b
Species	Human
Immunogen	Synthetic peptide of Human CD42b.
Conjugation	Un-conjugated
Alternate Names	CD antigen CD42b; Antigen CD42b-alpha; DBPLT3; VWDP; CD42B; GP-Ib alpha; Glycoprotein Ibalpha; BDPLT1; BSS; CD42b-alpha; GPIbA; GPIb-alpha; Platelet glycoprotein Ib alpha chain; BDPLT3; GP1B

### Application Instructions

Application table	Application	Dilution
	IHC-P	1:50 - 1:200
	WB	1:1000 - 1:5000
Application Note	* The dilutions indicate recommended starting dilutions and the optimal dilutions or concentrations should be determined by the scientist.	
Positive Control	Human spleen	
Observed Size	~ 140 kDa	

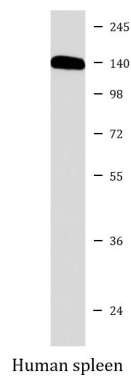
### Properties

Form	Liquid
Purification	Affinity purified.
Buffer	PBS (pH 7.4), 150 mM NaCl, 0.02% Sodium azide and 50% Glycerol.
Preservative	0.02% Sodium azide
Stabilizer	50% Glycerol
Storage instruction	For continuous use, store undiluted antibody at 2-8°C for up to a week. For long-term storage, aliquot and store at -20°C. Storage in frost free freezers is not recommended. Avoid repeated freeze/thaw cycles. Suggest spin the vial prior to opening. The antibody solution should be gently mixed before use.
Note	For laboratory research only, not for drug, diagnostic or other use.

## Bioinformation

Gene Symbol	GP1BA
Gene Full Name	glycoprotein Ib (platelet), alpha polypeptide
Background	Glycoprotein Ib (GP Ib) is a platelet surface membrane glycoprotein composed of a heterodimer, an alpha chain and a beta chain, that is linked by disulfide bonds. The Gp Ib functions as a receptor for von Willebrand factor (VWF). The complete receptor complex includes noncovalent association of the alpha and beta subunits with platelet glycoprotein IX and platelet glycoprotein V. The binding of the GP Ib-IX-V complex to VWF facilitates initial platelet adhesion to vascular subendothelium after vascular injury, and also initiates signaling events within the platelet that lead to enhanced platelet activation, thrombosis, and hemostasis. This gene encodes the alpha subunit. Mutations in this gene result in Bernard-Soulier syndromes and platelet-type von Willebrand disease. The coding region of this gene is known to contain a polymorphic variable number tandem repeat (VNTR) domain that is associated with susceptibility to nonarteritic anterior ischemic optic neuropathy. [provided by RefSeq, Oct 2013]
Function	GP-Ib, a surface membrane protein of platelets, participates in the formation of platelet plugs by binding to the A1 domain of vWF, which is already bound to the subendothelium. [UniProt]
Calculated Mw	72 kDa
PTM	Glycosylation, which is approximately coextensive with the extracellular part of the molecule, is cleaved off by calpain during platelet lysis. [UniProt]
Cellular Localization	Membrane; Single-pass type I membrane protein. [UniProt]

## Images



ARG41460 anti-CD42b antibody WB image

Western blot: Human spleen lysate stained with ARG41460 anti-CD42b antibody.