

## ARG41484 anti-CD18 / LFA1 beta antibody

Package: 100 µl  
Store at: -20°C

### Summary

Product Description	Rabbit Polyclonal antibody recognizes CD18 / LFA1 beta
Tested Reactivity	Hu, Ms, Rat
Tested Application	ICC/IF, IHC-P, WB
Host	Rabbit
Clonality	Polyclonal
Isotype	IgG
Target Name	CD18 / LFA1 beta
Species	Human
Immunogen	Recombinant protein of Human CD18 / LFA1 beta.
Conjugation	Un-conjugated
Alternate Names	MF17; LAD; CD antigen CD18; MFI7; MAC-1; Cell surface adhesion glycoproteins LFA-1/CR3/p150,95 subunit beta; LCAMB; Integrin beta-2; Complement receptor C3 subunit beta; LFA-1; CD18

### Application Instructions

Application table	Application	Dilution
	ICC/IF	1:50 - 1:200
	IHC-P	1:50 - 1:200
	WB	1:500 - 1:2000
Application Note	* The dilutions indicate recommended starting dilutions and the optimal dilutions or concentrations should be determined by the scientist.	
Positive Control	Mouse thymus	
Observed Size	~ 98 kDa	

### Properties

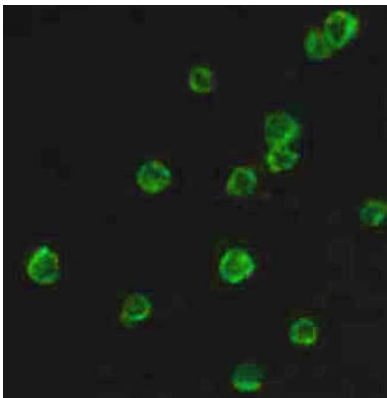
Form	Liquid
Purification	Affinity purified.
Buffer	PBS (pH 7.3), 0.02% Sodium azide and 50% Glycerol.
Preservative	0.02% Sodium azide
Stabilizer	50% Glycerol
Storage instruction	For continuous use, store undiluted antibody at 2-8°C for up to a week. For long-term storage, aliquot and store at -20°C. Storage in frost free freezers is not recommended. Avoid repeated freeze/thaw cycles. Suggest spin the vial prior to opening. The antibody solution should be gently mixed before use.

Note For laboratory research only, not for drug, diagnostic or other use.

## Bioinformation

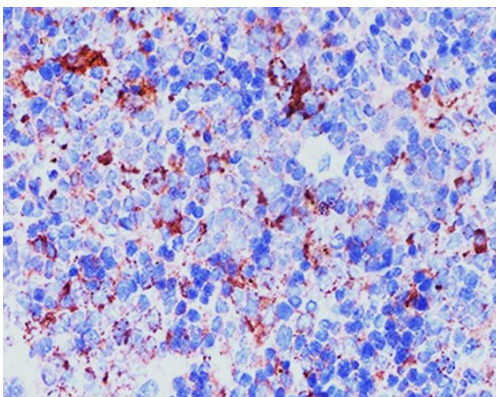
Gene Symbol	ITGB2
Gene Full Name	integrin, beta 2 (complement component 3 receptor 3 and 4 subunit)
Background	This gene encodes an integrin beta chain, which combines with multiple different alpha chains to form different integrin heterodimers. Integrins are integral cell-surface proteins that participate in cell adhesion as well as cell-surface mediated signalling. The encoded protein plays an important role in immune response and defects in this gene cause leukocyte adhesion deficiency. Alternative splicing results in multiple transcript variants. [provided by RefSeq, Dec 2014]
Function	Integrin alpha-L/beta-2 is a receptor for ICAM1, ICAM2, ICAM3 and ICAM4. Integrins alpha-M/beta-2 and alpha-X/beta-2 are receptors for the iC3b fragment of the third complement component and for fibrinogen. Integrin alpha-X/beta-2 recognizes the sequence G-P-R in fibrinogen alpha-chain. Integrin alpha-M/beta-2 recognizes P1 and P2 peptides of fibrinogen gamma chain. Integrin alpha-M/beta-2 is also a receptor for factor X. Integrin alpha-D/beta-2 is a receptor for ICAM3 and VCAM1. Triggers neutrophil transmigration during lung injury through PTK2B/PYK2-mediated activation. [UniProt]
Calculated Mw	85 kDa
PTM	Both Ser-745 and Ser-756 become phosphorylated when T-cells are exposed to phorbol esters (PubMed:11700305). Phosphorylation on Thr-758 (but not on Ser-756) allows interaction with 14-3-3 proteins (PubMed:11700305, PubMed:16301335). [UniProt]
Cellular Localization	Cell membrane; Single-pass type I membrane protein. Membrane raft; Single-pass type I membrane protein. [UniProt]

## Images



ARG41484 anti-CD18 / LFA1 beta antibody ICC/IF image

Immunofluorescence: RAW264.7 cells stained with ARG41484 anti-CD18 / LFA1 beta antibody at 1:100 dilution.



ARG41484 anti-CD18 / LFA1 beta antibody IHC-P image

Immunohistochemistry: Paraffin-embedded Mouse spleen tissue stained with ARG41484 anti-CD18 / LFA1 beta antibody at 1:100 dilution.

ARG41484 anti-CD18 / LFA1 beta antibody WB image

Western blot: 25 µg of Mouse thymus lysate stained with ARG41484 anti-CD18 / LFA1 beta antibody at 1:1000 dilution.

