

ARG41501 anti-Renilla Luciferase antibody

Package: 100 µl
Store at: -20°C

Summary

Product Description	Rabbit Polyclonal antibody recognizes Renilla Luciferase
Tested Reactivity	Other
Tested Application	ICC/IF, WB
Host	Rabbit
Clonality	Polyclonal
Isotype	IgG
Target Name	Renilla Luciferase
Immunogen	Synthetic peptide of Renilla Luciferase.
Conjugation	Un-conjugated

Application Instructions

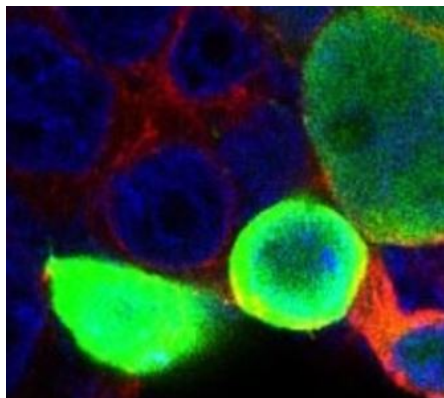
Application table	Application	Dilution
	ICC/IF	1:50 - 1:200
	WB	1:500 - 1:2000
Application Note	* The dilutions indicate recommended starting dilutions and the optimal dilutions or concentrations should be determined by the scientist.	
Observed Size	~ 35 kDa	

Properties

Form	Liquid
Purification	Affinity purified.
Buffer	PBS (pH 7.4), 150 mM NaCl, 0.02% Sodium azide and 50% Glycerol.
Preservative	0.02% Sodium azide
Stabilizer	50% Glycerol
Storage instruction	For continuous use, store undiluted antibody at 2-8°C for up to a week. For long-term storage, aliquot and store at -20°C. Storage in frost free freezers is not recommended. Avoid repeated freeze/thaw cycles. Suggest spin the vial prior to opening. The antibody solution should be gently mixed before use.
Note	For laboratory research only, not for drug, diagnostic or other use.

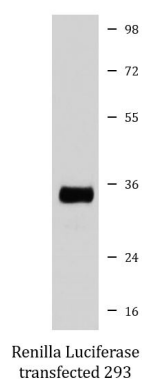
Bioinformation

Calculated Mw	36 kDa
---------------	--------



ARG41501 anti-Renilla Luciferase antibody ICC/IF image

Immunofluorescence: 293 cells transfected with Renilla Luciferase, using ARG41501 anti-Renilla Luciferase antibody (green). DAPI (blue) for nuclear staining.



ARG41501 anti-Renilla Luciferase antibody WB image

Western blot: Renilla Luciferase transfected 293 cells. Cell lysates were stained with ARG41501 anti-Renilla Luciferase antibody.