

ARG41506 anti-CD107b / LAMP2A antibody

Package: 100 µl
Store at: -20°C

Summary

Product Description	Rabbit Polyclonal antibody recognizes CD107b / LAMP2A
Tested Reactivity	Hu, Ms, Rat
Tested Application	IHC-P, IP, WB
Specificity	The immunogen sequence was designed to react LAMP2A isoform only (from 370 to 410) and it does not react to LAMP2B and LAMP2C.
Host	Rabbit
Clonality	Polyclonal
Isotype	IgG
Target Name	CD107b / LAMP2a
Species	Human
Immunogen	Synthetic peptide between a.a. 370-410 of Human CD107b / LAMP2A (Uniprot ID: P13473-1).
Conjugation	Un-conjugated
Alternate Names	CD antigen CD107b; LAMPB; CD107b; LGP110; Lysosome-associated membrane glycoprotein 2; LAMP-2; CD107 antigen-like family member B; Lysosome-associated membrane protein 2; LAMP-2A

Application Instructions

Application table	Application	Dilution
	IHC-P	1:50 - 1:200
	IP	1:50
	WB	1:500 - 1:2000
Application Note	* The dilutions indicate recommended starting dilutions and the optimal dilutions or concentrations should be determined by the scientist.	
Positive Control	JAR	

Properties

Form	Liquid
Purification	Affinity purified.
Buffer	PBS (pH 7.4), 150 mM NaCl, 0.02% Sodium azide and 50% Glycerol.
Preservative	0.02% Sodium azide
Stabilizer	50% Glycerol
Storage instruction	For continuous use, store undiluted antibody at 2-8°C for up to a week. For long-term storage, aliquot and store at -20°C. Storage in frost free freezers is not recommended. Avoid repeated freeze/thaw cycles. Suggest spin the vial prior to opening. The antibody solution should be gently mixed before use.

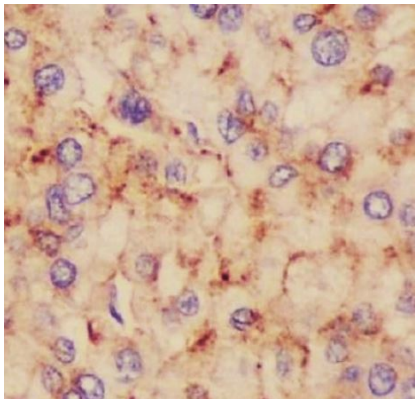
Note

For laboratory research only, not for drug, diagnostic or other use.

Bioinformation

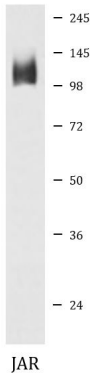
Gene Symbol	LAMP2
Gene Full Name	lysosomal-associated membrane protein 2A
Background	The protein encoded by this gene is a member of a family of membrane glycoproteins. This glycoprotein provides selectins with carbohydrate ligands. It may play a role in tumor cell metastasis. It may also function in the protection, maintenance, and adhesion of the lysosome. Alternative splicing of this gene results in multiple transcript variants encoding distinct proteins. [provided by RefSeq, Jul 2008]
Function	Implicated in tumor cell metastasis. May function in protection of the lysosomal membrane from autodigestion, maintenance of the acidic environment of the lysosome, adhesion when expressed on the cell surface (plasma membrane), and inter- and intracellular signal transduction. Protects cells from the toxic effects of methylating mutagens. [UniProt]
Calculated Mw	45 kDa
PTM	O- and N-glycosylated; some of the 16 N-linked glycans are polylactosaminoglycans. [UniProt]
Cellular Localization	Cell membrane; Single-pass type I membrane protein. Endosome membrane; Single-pass type I membrane protein. Lysosome membrane; Single-pass type I membrane protein. Cytoplasmic vesicle, autophagosome membrane. Note=This protein shuttles between lysosomes, endosomes, and the plasma membrane. [UniProt]

Images



ARG41506 anti-CD107b / LAMP2A antibody IHC-P image

Immunohistochemistry: Paraffin-embedded Human liver cancer tissue stained with ARG41506 anti-CD107b / LAMP2A antibody.



ARG41506 anti-CD107b / LAMP2A antibody WB image

Western blot: JAR cell lysate stained with ARG41506 anti-CD107b / LAMP2A antibody.