

## ARG41517 anti-Cytokeratin 2e antibody

Package: 100 µl  
Store at: -20°C

### Summary

Product Description	Rabbit Polyclonal antibody recognizes Cytokeratin 2e
Tested Reactivity	Hu
Tested Application	IHC-P, WB
Host	Rabbit
Clonality	Polyclonal
Isotype	IgG
Target Name	Cytokeratin 2e
Species	Human
Immunogen	Synthetic peptide of Human Cytokeratin 2e.
Conjugation	Un-conjugated
Alternate Names	Cytokeratin-2e; K2e; KRTE; Type-II keratin Kb2; Keratin, type II cytoskeletal 2 epidermal; Keratin-2e; CK-2e; Epithelial keratin-2e; KRT2A; Keratin-2 epidermis; KRT2E

### Application Instructions

Application table	Application	Dilution
	IHC-P	1:50 - 1:200
	WB	1:1000 - 1:2000
Application Note	* The dilutions indicate recommended starting dilutions and the optimal dilutions or concentrations should be determined by the scientist.	
Positive Control	A431	
Observed Size	~ 55 kDa	

### Properties

Form	Liquid
Purification	Affinity purified.
Buffer	PBS (pH 7.4), 150 mM NaCl, 0.02% Sodium azide and 50% Glycerol.
Preservative	0.02% Sodium azide
Stabilizer	50% Glycerol
Storage instruction	For continuous use, store undiluted antibody at 2-8°C for up to a week. For long-term storage, aliquot and store at -20°C. Storage in frost free freezers is not recommended. Avoid repeated freeze/thaw cycles. Suggest spin the vial prior to opening. The antibody solution should be gently mixed before use.
Note	For laboratory research only, not for drug, diagnostic or other use.

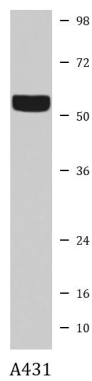
## Bioinformation

---

Gene Symbol	KRT2
Gene Full Name	keratin 2, type II
Background	The protein encoded by this gene is a member of the keratin gene family. The type II cytokeratins consist of basic or neutral proteins which are arranged in pairs of heterotypic keratin chains coexpressed during differentiation of simple and stratified epithelial tissues. This type II cytokeratin is expressed largely in the upper spinous layer of epidermal keratinocytes and mutations in this gene have been associated with bullous congenital ichthyosiform erythroderma. The type II cytokeratins are clustered in a region of chromosome 12q12-q13. [provided by RefSeq, Jul 2008]
Function	Probably contributes to terminal cornification. Associated with keratinocyte activation, proliferation and keratinization. [UniProt]
Calculated Mw	65 kDa

## Images

---



ARG41517 anti-Cytokeratin 2e antibody WB image

Western blot: A431 cell lysate stained with ARG41517 anti-Cytokeratin 2e antibody.