

## ARG41533 anti-CD32 antibody

Package: 100 µl  
Store at: -20°C

### Summary

Product Description	Rabbit Polyclonal antibody recognizes CD32
Tested Reactivity	Hu
Tested Application	IHC-P, WB
Host	Rabbit
Clonality	Polyclonal
Isotype	IgG
Target Name	CD32
Species	Human
Immunogen	Synthetic peptide of Human CD32.
Conjugation	Un-conjugated
Alternate Names	Fc-gamma RII-a; CD antigen CD32; FcGR; IgG Fc receptor II-a; FCGR2A1; CD32A; FCGR2; Low affinity immunoglobulin gamma Fc region receptor II-a; FcRII-a; Fc-gamma-RIIa; FCG2; IGFR2; CD32; CDw32

### Application Instructions

Application table	Application	Dilution
	IHC-P	1:50 - 1:200
	WB	1:500 - 1:2000
Application Note	* The dilutions indicate recommended starting dilutions and the optimal dilutions or concentrations should be determined by the scientist.	
Positive Control	K562	
Observed Size	~ 40 kDa	

### Properties

Form	Liquid
Purification	Affinity purified.
Buffer	PBS (pH 7.4), 150 mM NaCl, 0.02% Sodium azide and 50% Glycerol.
Preservative	0.02% Sodium azide
Stabilizer	50% Glycerol
Storage instruction	For continuous use, store undiluted antibody at 2-8°C for up to a week. For long-term storage, aliquot and store at -20°C. Storage in frost free freezers is not recommended. Avoid repeated freeze/thaw cycles. Suggest spin the vial prior to opening. The antibody solution should be gently mixed before use.
Note	For laboratory research only, not for drug, diagnostic or other use.

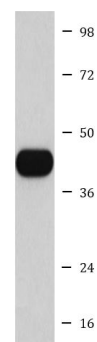
## Bioinformation

---

Gene Symbol	FCGR2A
Gene Full Name	Fc fragment of IgG, low affinity IIa, receptor (CD32)
Background	This gene encodes one member of a family of immunoglobulin Fc receptor genes found on the surface of many immune response cells. The protein encoded by this gene is a cell surface receptor found on phagocytic cells such as macrophages and neutrophils, and is involved in the process of phagocytosis and clearing of immune complexes. Alternative splicing results in multiple transcript variants. [provided by RefSeq, Oct 2008]
Function	Binds to the Fc region of immunoglobulins gamma. Low affinity receptor. By binding to IgG it initiates cellular responses against pathogens and soluble antigens. Promotes phagocytosis of opsonized antigens. [UniProt]
Calculated Mw	35 kDa
PTM	Phosphorylated by SRC-type Tyr-kinases such as LYN, BLK, FYN, HCK and SYK. [UniProt]
Cellular Localization	Cell membrane; Single-pass type I membrane protein. [UniProt]

## Images

---



K562

ARG41533 anti-CD32 antibody WB image

Western blot: K562 cell lysate stained with ARG41533 anti-CD32 antibody.