

## ARG41551 anti-PBRM1 / Baf180 antibody

Package: 100 µl  
Store at: -20°C

### Summary

Product Description	Rabbit Polyclonal antibody recognizes PBRM1 / Baf180
Tested Reactivity	Hu, Ms, Rat
Tested Application	FACS, ICC/IF, IHC-P, WB
Host	Rabbit
Clonality	Polyclonal
Isotype	IgG
Target Name	PBRM1 / Baf180
Species	Human
Immunogen	Synthetic peptide of Human PBRM1 / Baf180.
Conjugation	Un-conjugated
Alternate Names	hPB1; PB1; Protein polybromo-1; BAF180; Polybromo-1D; BRG1-associated factor 180

### Application Instructions

Application table	Application	Dilution
	FACS	1:50
	ICC/IF	1:50 - 1:100
	IHC-P	1:100 - 1:500
	WB	1:500 - 1:2000
Application Note	* The dilutions indicate recommended starting dilutions and the optimal dilutions or concentrations should be determined by the scientist.	
Positive Control	HeLa	
Observed Size	~ 210 kDa	

### Properties

Form	Liquid
Purification	Affinity purified.
Buffer	PBS (pH 7.4), 150 mM NaCl, 0.02% Sodium azide and 50% Glycerol.
Preservative	0.02% Sodium azide
Stabilizer	50% Glycerol
Storage instruction	For continuous use, store undiluted antibody at 2-8°C for up to a week. For long-term storage, aliquot and store at -20°C. Storage in frost free freezers is not recommended. Avoid repeated freeze/thaw cycles. Suggest spin the vial prior to opening. The antibody solution should be gently mixed before use.

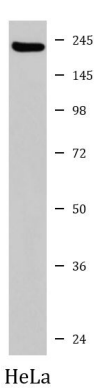
Note

For laboratory research only, not for drug, diagnostic or other use.

Bioinformation

Gene Symbol	PBRM1
Gene Full Name	polybromo 1
Background	This locus encodes a subunit of ATP-dependent chromatin-remodeling complexes. The encoded protein has been identified as in integral component of complexes necessary for ligand-dependent transcriptional activation by nuclear hormone receptors. Mutations at this locus have been associated with primary clear cell renal cell carcinoma. [provided by RefSeq, Feb 2012]
Function	Involved in transcriptional activation and repression of select genes by chromatin remodeling (alteration of DNA-nucleosome topology). Acts as a negative regulator of cell proliferation. [UniProt]
Calculated Mw	193 kDa
Cellular Localization	Nucleus. [UniProt]

Images



ARG41551 anti-PBRM1 / Baf180 antibody WB image

Western blot: HeLa cell lysate stained with ARG41551 anti-PBRM1 / Baf180 antibody.