

## ARG41565 anti-IL18 antibody

Package: 50 µg  
Store at: -20°C

### Summary

Product Description	Rabbit Polyclonal antibody recognizes IL18
Tested Reactivity	Ms, Rat
Tested Application	FACS, IHC-P, WB
Host	Rabbit
Clonality	Polyclonal
Isotype	IgG
Target Name	IL18
Species	Rat
Immunogen	Recombinant protein corresponding to H37-S194 of Rat IL18.
Conjugation	Un-conjugated
Alternate Names	Ibogatadekin; Interferon gamma-inducing factor; Interleukin-18; IL-18; IFN-gamma-inducing factor; IL-1 gamma; IGIF; IL-1g; Interleukin-1 gamma; IL1F4

### Application Instructions

Application table	Application	Dilution
	FACS	1:150 - 1:500
	IHC-P	1:200 - 1:1000
	WB	1:500 - 1:2000
Application Note	IHC-P: Antigen Retrieval: Heat mediation was performed in EDTA buffer (pH 8.0). * The dilutions indicate recommended starting dilutions and the optimal dilutions or concentrations should be determined by the scientist.	
Observed Size	~ 22 kDa	

### Properties

Form	Liquid
Purification	Affinity purification with immunogen.
Buffer	0.2% Na <sub>2</sub> HPO <sub>4</sub> , 0.9% NaCl, 0.05% Sodium azide and 5% BSA.
Preservative	0.05% Sodium azide
Stabilizer	5% BSA
Concentration	0.5 mg/ml
Storage instruction	For continuous use, store undiluted antibody at 2-8°C for up to a week. For long-term storage, aliquot and store at -20°C or below. Storage in frost free freezers is not recommended. Avoid repeated freeze/thaw cycles. Suggest spin the vial prior to opening. The antibody solution should be gently mixed

before use.

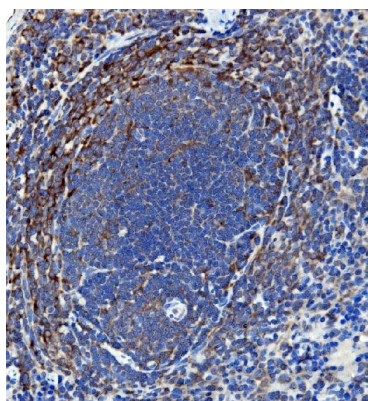
Note

For laboratory research only, not for drug, diagnostic or other use.

## Bioinformation

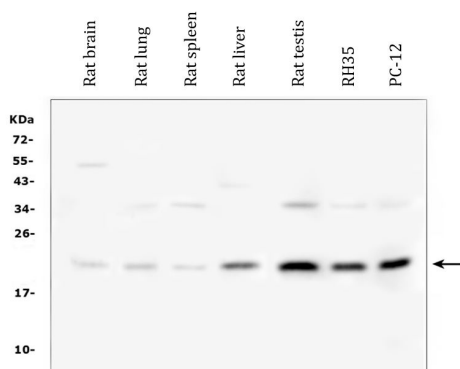
Gene Symbol	IL18
Gene Full Name	interleukin 18
Background	The protein encoded by this gene is a proinflammatory cytokine that augments natural killer cell activity in spleen cells, and stimulates interferon gamma production in T-helper type I cells. Alternatively spliced transcript variants encoding different isoforms have been found for this gene.[provided by RefSeq, Aug 2011]
Function	Augments natural killer cell activity in spleen cells and stimulates interferon gamma production in T-helper type I cells. [UniProt]
Calculated Mw	22 kDa
PTM	The pro-IL-18 precursor is processed by CASP1 or CASP4 to yield the active form. [UniProt]
Cellular Localization	Secreted. [UniProt]

## Images



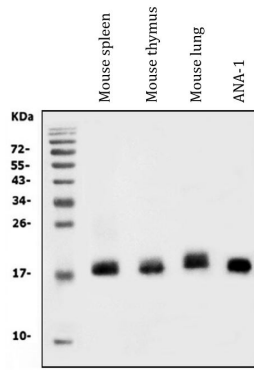
ARG41565 anti-IL18 antibody IHC-P image

Immunohistochemistry: Paraffin-embedded Rat spleen tissue. Antigen Retrieval: Heat mediation was performed in EDTA buffer (pH 8.0). The tissue section was blocked with 10% goat serum. The tissue section was then stained with ARG41565 anti-IL18 antibody at 2 µg/ml dilution, overnight at 4°C.



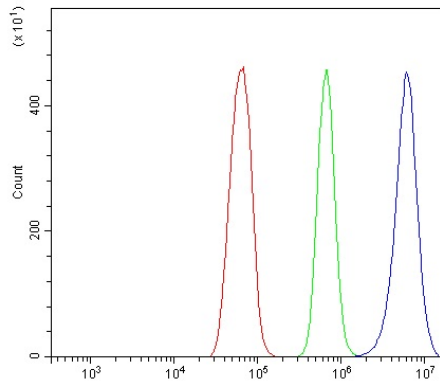
ARG41565 anti-IL18 antibody WB image

Western blot: 50 µg of samples under reducing conditions. Rat brain, Rat lung, Rat spleen, Rat liver, Rat testis, RH35 and PC-12 whole cell lysates stained with ARG41565 anti-IL18 antibody at 0.5 µg/ml dilution, overnight at 4°C.



#### ARG41565 anti-IL18 antibody WB image

Western blot: 30  $\mu\text{g}$  of sample under reducing conditions. Mouse spleen, Mouse thymus, Mouse lung and ANA-1 whole cell lysates stained with ARG41565 anti-IL18 antibody at 0.5  $\mu\text{g}/\text{ml}$  dilution, overnight at 4°C.



#### ARG41565 anti-IL18 antibody FACS image

Flow Cytometry: RH35 cells were blocked with 10% normal goat serum and then stained with ARG41565 anti-IL18 antibody (blue) at 1  $\mu\text{g}/10^6$  cells for 30 min at 20°C, followed by incubation with DyLight<sup>®</sup>488 labelled secondary antibody. Isotype control antibody (green) was rabbit IgG (1  $\mu\text{g}/10^6$  cells) used under the same conditions. Unlabelled sample (red) was also used as a control.