

ARG41591 anti-CD147 antibody

Package: 100 µl
Store at: -20°C

Summary

| | |
|---------------------|--|
| Product Description | Rabbit Polyclonal antibody recognizes CD147 |
| Tested Reactivity | Hu, Ms, Rat |
| Tested Application | IHC-P, IP, WB |
| Host | Rabbit |
| Clonality | Polyclonal |
| Isotype | IgG |
| Target Name | CD147 |
| Species | Human |
| Immunogen | Recombinant fusion protein corresponding to aa. 30-200 of Human CD147 (NP_940991.1). |
| Conjugation | Un-conjugated |
| Alternate Names | OK; Tumor cell-derived collagenase stimulatory factor; Leukocyte activation antigen M6; TCSF; Extracellular matrix metalloproteinase inducer; OK blood group antigen; CD147; Basigin; M6; EMMPRIN; Collagenase stimulatory factor; CD antigen CD147; 5F7 |

Application Instructions

| Application table | Application | Dilution |
|-------------------|--|-----------------|
| | IHC-P | 1:50 - 1:200 |
| | IP | Assay-dependent |
| | WB | 1:500 - 1:2000 |
| Application Note | * The dilutions indicate recommended starting dilutions and the optimal dilutions or concentrations should be determined by the scientist. | |

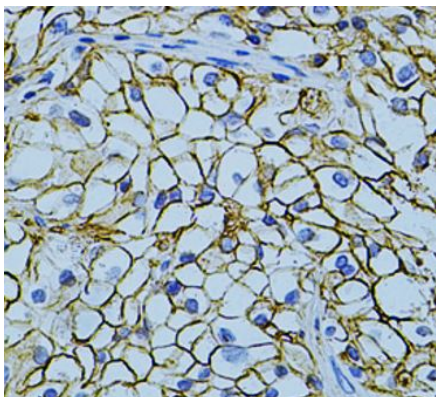
Properties

| | |
|---------------------|---|
| Form | Liquid |
| Purification | Affinity purified. |
| Buffer | PBS (pH 7.3), 0.02% Sodium azide and 50% Glycerol. |
| Preservative | 0.02% Sodium azide |
| Stabilizer | 50% Glycerol |
| Storage instruction | For continuous use, store undiluted antibody at 2-8°C for up to a week. For long-term storage, aliquot and store at -20°C. Storage in frost free freezers is not recommended. Avoid repeated freeze/thaw cycles. Suggest spin the vial prior to opening. The antibody solution should be gently mixed before use. |
| Note | For laboratory research only, not for drug, diagnostic or other use. |

Bioinformation

| | |
|-----------------------|--|
| Gene Symbol | BSG |
| Gene Full Name | basigin (Ok blood group) |
| Background | The protein encoded by this gene is a plasma membrane protein that is important in spermatogenesis, embryo implantation, neural network formation, and tumor progression. The encoded protein is also a member of the immunoglobulin superfamily. Multiple transcript variants encoding different isoforms have been found for this gene. [provided by RefSeq, Jul 2008] |
| Function | Plays an important role in targeting the monocarboxylate transporters SLC16A1, SLC16A3 and SLC16A8 to the plasma membrane. Plays pivotal roles in spermatogenesis, embryo implantation, neural network formation and tumor progression. Stimulates adjacent fibroblasts to produce matrix metalloproteinases (MMPs). Seems to be a receptor for oligomannosidic glycans. In vitro, promotes outgrowth of astrocytic processes. [UniProt] |
| Calculated Mw | 42 kDa |
| PTM | N-glycosylated. [UniProt] |
| Cellular Localization | Cell membrane; Single-pass type I membrane protein. Melanosome. Note=Identified by mass spectrometry in melanosome fractions from stage I to stage IV. In spermatozoa, localized on the principal piece of caput and in the middle piece during transit in the corpus and cauda epididymides (By similarity). [UniProt] |

Images



ARG41591 anti-CD147 antibody IHC-P image

Immunohistochemistry: Paraffin-embedded Human kidney tissue stained with ARG41591 anti-CD147 antibody at 1:200 dilution.