

## ARG41690 anti-SLC15A2 / PepT2 antibody

Package: 50 µl  
Store at: -20°C

### Summary

Product Description	Rabbit Polyclonal antibody recognizes SLC15A2 / PepT2
Tested Reactivity	Hu
Predict Reactivity	Ms, Rat, Cow, Dog, Gpig, Hrs, Pig, Rb
Tested Application	WB
Host	Rabbit
Clonality	Polyclonal
Isotype	IgG
Target Name	SLC15A2 / PepT2
Species	Human
Immunogen	Synthetic peptide around the middle region of Human SLC15A2 / PepT2. (within the following region: GNENNSLLIESIKSFQKTPHYSKLHLKTKSQDFHFHLKYHNLSLYTEHSV)
Conjugation	Un-conjugated
Alternate Names	Kidney H; Solute carrier family 15 member 2; Oligopeptide transporter, kidney isoform; PEPT2; Peptide transporter 2

### Application Instructions

Predict Reactivity Note	Predicted Homology Based On Immunogen Sequence: Cow: 86%; Dog: 83%; Guinea pig: 79%; Horse: 93%; Mouse: 79%; Pig: 86%; Rabbit: 93%; Rat: 79%				
Application table	<table> <tr> <th>Application</th><th>Dilution</th></tr> <tr> <td>WB</td><td>0.2 - 1 µg/ml</td></tr> </table>	Application	Dilution	WB	0.2 - 1 µg/ml
Application	Dilution				
WB	0.2 - 1 µg/ml				
Application Note	* The dilutions indicate recommended starting dilutions and the optimal dilutions or concentrations should be determined by the scientist.				
Positive Control	MCF7				
Observed Size	~ 90 kDa				

### Properties

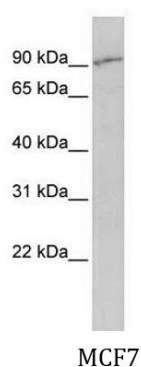
Form	Liquid
Purification	Affinity purified.
Buffer	PBS, 0.09% (w/v) Sodium azide and 2% Sucrose.
Preservative	0.09% (w/v) Sodium azide
Stabilizer	2% Sucrose
Concentration	Batch dependent: 0.5 - 1 mg/ml

Storage instruction	For continuous use, store undiluted antibody at 2-8°C for up to a week. For long-term storage, aliquot and store at -20°C or below. Storage in frost free freezers is not recommended. Avoid repeated freeze/thaw cycles. Suggest spin the vial prior to opening. The antibody solution should be gently mixed before use.
Note	For laboratory research only, not for drug, diagnostic or other use.

## Bioinformation

Gene Symbol	SLC15A2
Gene Full Name	solute carrier family 15 (oligopeptide transporter), member 2
Background	The mammalian kidney expresses a proton-coupled peptide transporter that is responsible for the absorption of small peptides, as well as beta-lactam antibiotics and other peptide-like drugs, from the tubular filtrate. This transporter, SLC15A2, belongs to the same gene family as SLC15A1 (MIM 600544), the proton-coupled peptide transporter found in the small intestine (Liu et al, 1995 [PubMed 7756356]).[supplied by OMIM, Feb 2011]
Function	Proton-coupled intake of oligopeptides of 2 to 4 amino acids with a preference for dipeptides. [UniProt]
Calculated Mw	82 kDa
Cellular Localization	Cell membrane; Multi-pass membrane protein. [UniProt]

## Images



ARG41690 anti-SLC15A2 / PepT2 antibody WB image

Western blot: MCF7 cell lysate stained with ARG41690 anti-SLC15A2 / PepT2 antibody at 0.2 - 1 µg/ml dilution.