

ARG41710 anti-SGCG / gamma Sarcoglycan antibody

Package: 100 µl
Store at: -20°C

Summary

Product Description	Rabbit Polyclonal antibody recognizes SGCG / gamma Sarcoglycan
Tested Reactivity	Hu
Tested Application	IHC-P, IP, WB
Host	Rabbit
Clonality	Polyclonal
Isotype	IgG
Target Name	SGCG / gamma Sarcoglycan
Species	Human
Immunogen	Synthetic peptide of Human SGCG / gamma Sarcoglycan
Conjugation	Un-conjugated
Alternate Names	35DAG; DMDA1; TYPE; SCG3; DMDA; Gamma-sarcoglycan; DAGA4; 35 kDa dystrophin-associated glycoprotein; A4; SCARMD2; Gamma-SG; LGMD2C; MAM

Application Instructions

Application table	Application	Dilution
	IHC-P	1:50 - 1:200
	IP	1:50
	WB	1:500 - 1:2000
Application Note	* The dilutions indicate recommended starting dilutions and the optimal dilutions or concentrations should be determined by the scientist.	
Observed Size	~ 32 kDa	

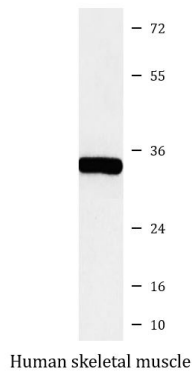
Properties

Form	Liquid
Purification	Affinity purified.
Buffer	PBS (pH 7.4), 150 mM NaCl, 0.02% Sodium azide and 50% Glycerol.
Preservative	0.02% Sodium azide
Stabilizer	50% Glycerol
Storage instruction	For continuous use, store undiluted antibody at 2-8°C for up to a week. For long-term storage, aliquot and store at -20°C. Storage in frost free freezers is not recommended. Avoid repeated freeze/thaw cycles. Suggest spin the vial prior to opening. The antibody solution should be gently mixed before use.
Note	For laboratory research only, not for drug, diagnostic or other use.

Bioinformation

Gene Symbol	SGCG
Gene Full Name	sarcoglycan, gamma (35kDa dystrophin-associated glycoprotein)
Background	This gene encodes gamma-sarcoglycan, one of several sarcolemmal transmembrane glycoproteins that interact with dystrophin. The dystrophin-glycoprotein complex (DGC) spans the sarcolemma and is comprised of dystrophin, syntrophin, alpha- and beta-dystroglycans and sarcoglycans. The DGC provides a structural link between the subsarcolemmal cytoskeleton and the extracellular matrix of muscle cells. Defects in the encoded protein can lead to early onset autosomal recessive muscular dystrophy, in particular limb-girdle muscular dystrophy, type 2C (LGMD2C). [provided by RefSeq, Oct 2008]
Function	Component of the sarcoglycan complex, a subcomplex of the dystrophin-glycoprotein complex which forms a link between the F-actin cytoskeleton and the extracellular matrix. [UniProt]
Calculated Mw	32 kDa
Cellular Localization	Cell membrane, sarcolemma; Single-pass type II membrane protein. Cytoplasm, cytoskeleton. [UniProt]

Images



ARG41710 anti-SGCG / gamma Sarcoglycan antibody WB image

Western blot: Human skeletal muscle lysate stained with ARG41710 anti-SGCG / gamma Sarcoglycan antibody.